



R.I. DIVISION OF PUBLIC UTILITIES AND CARRIERS, R.I. OFFICE
OF ENERGY RESOURCES & PUBLIC UTILITIES COMMISSION

GUIDING THE FUTURE OF RHODE ISLAND'S ELECTRICAL GRID



THE OPPORTUNITY

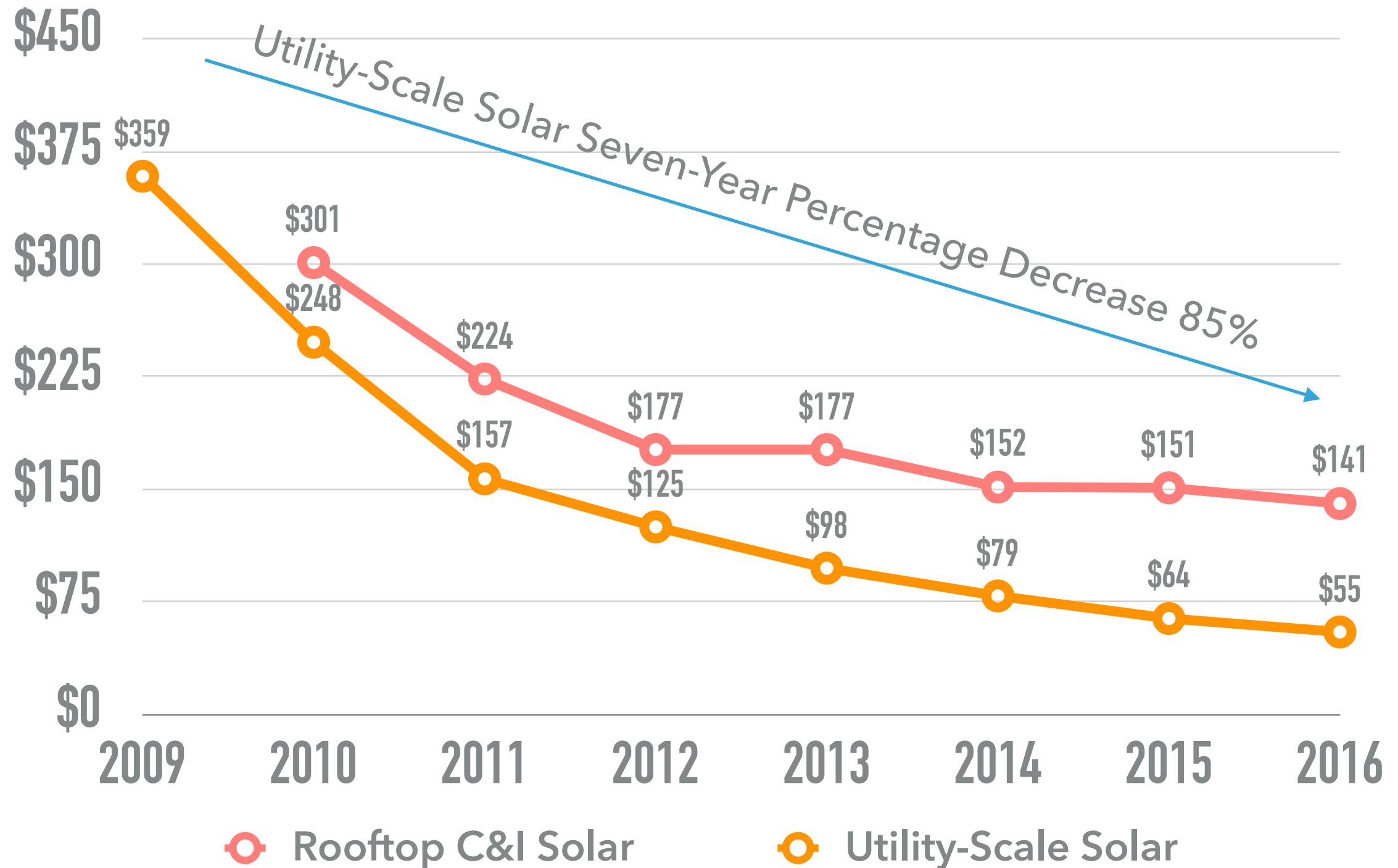
**FOR CLEAN
ENERGY**

1000 MW BY 2020



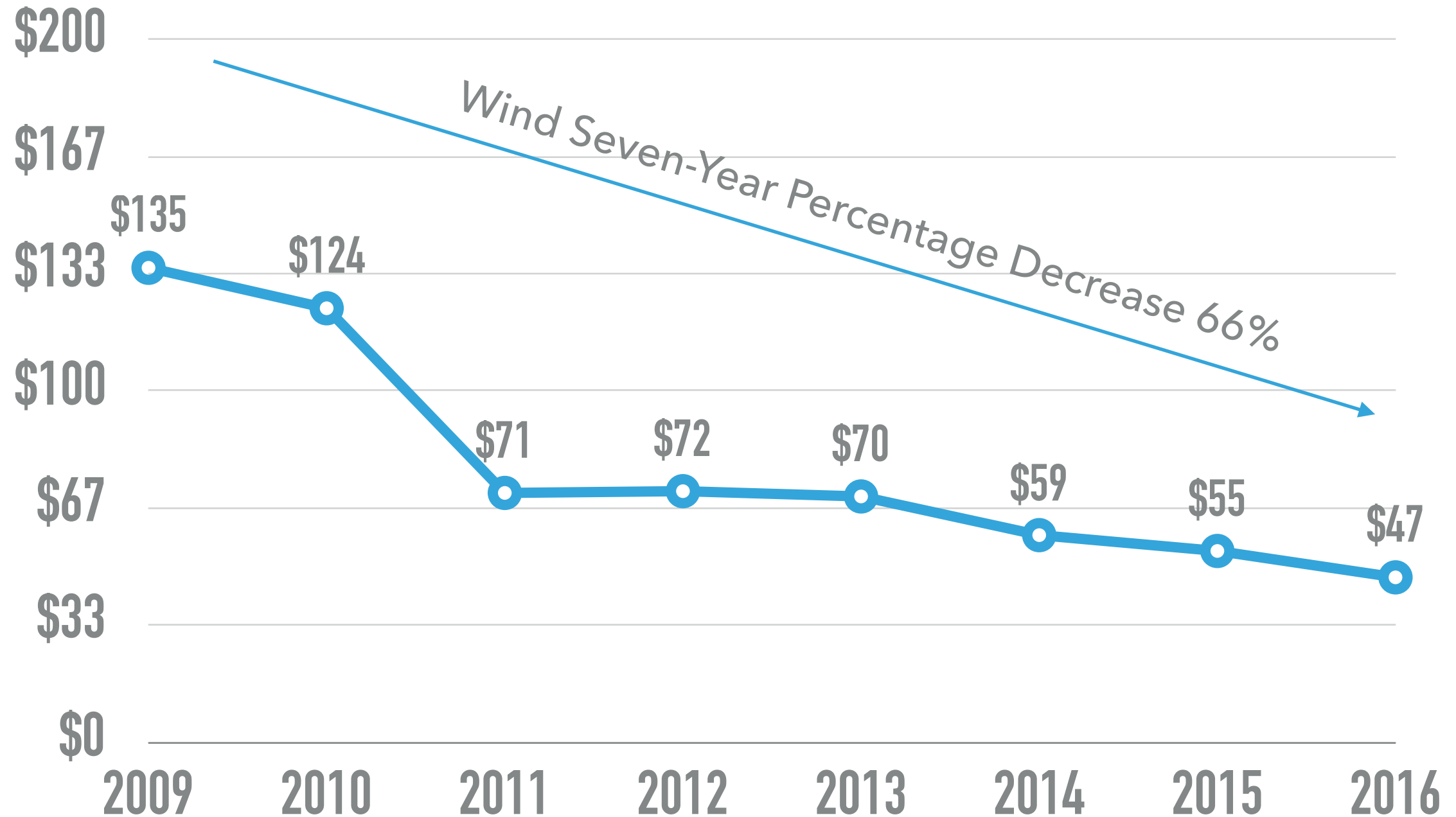
UNSUBSIDIZED LEVELIZED COST OF SOLAR

LCOE
\$/MWh



UNSUBSIDIZED LEVELIZED COST OF WIND

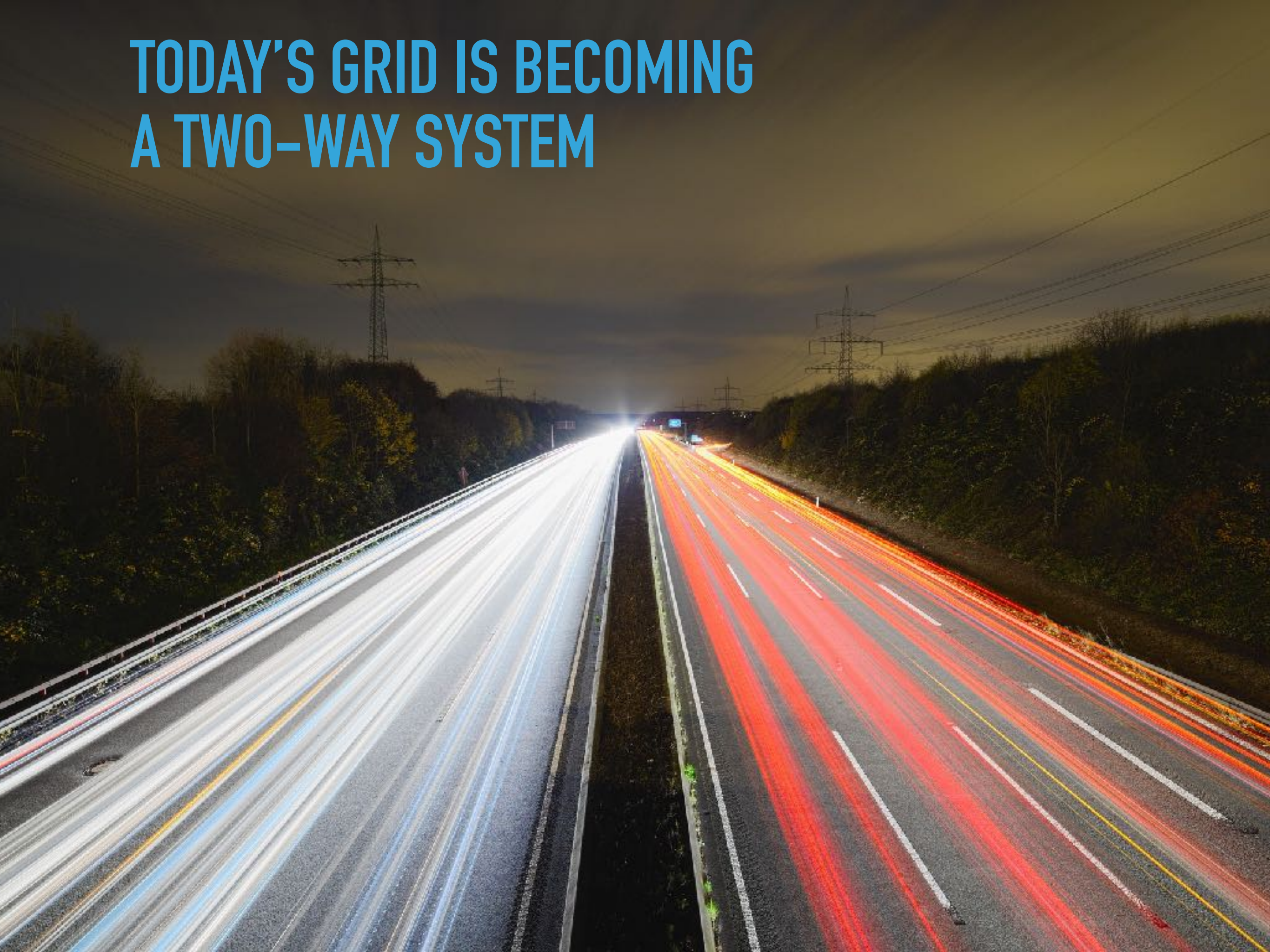
LCOE
\$/MWh



THE GRID WAS BUILT FOR A DIFFERENT ERA



TODAY'S GRID IS BECOMING A TWO-WAY SYSTEM





INTEGRATE RENEWABLES

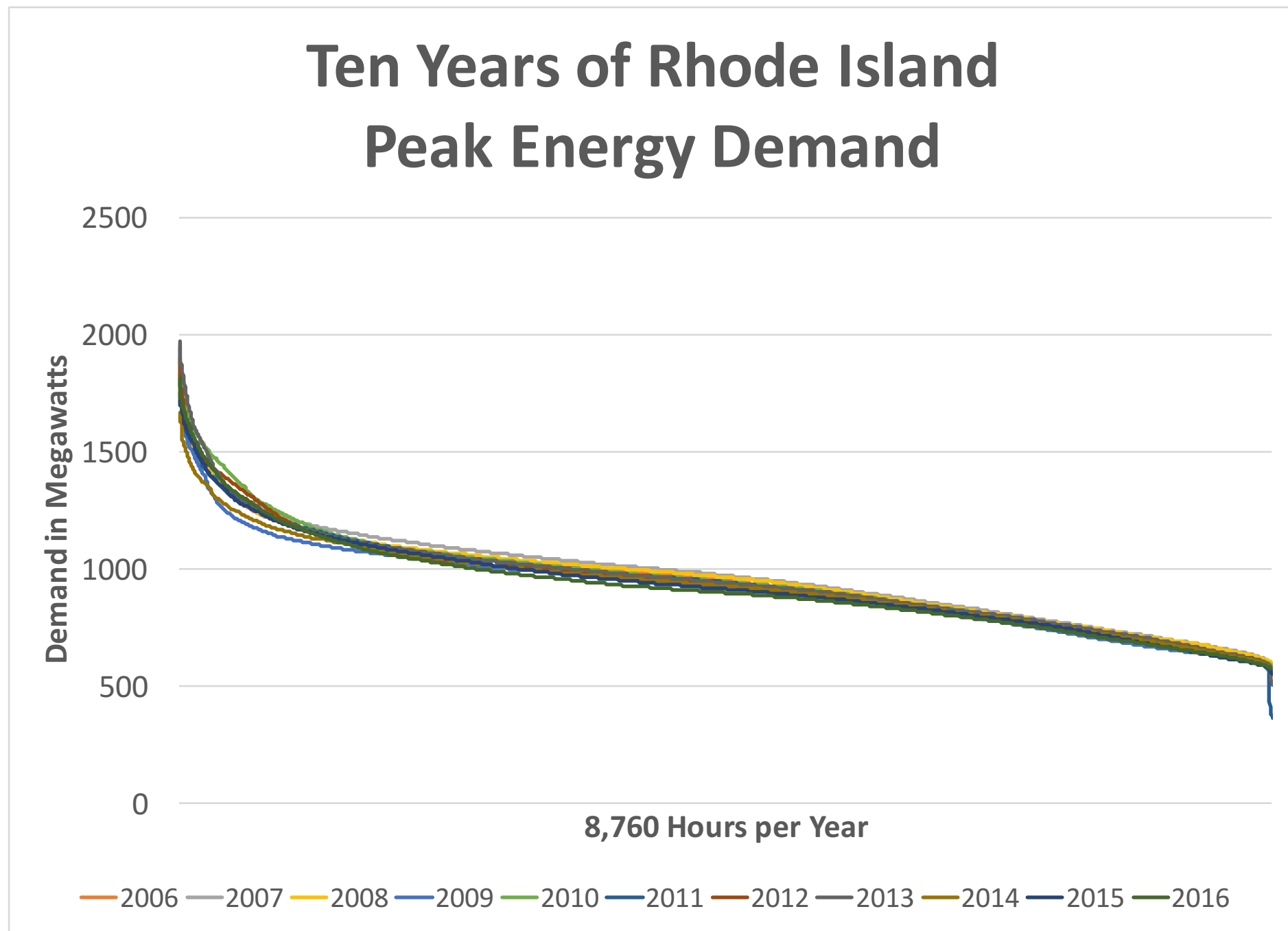
GIVE CUSTOMERS OPTIONS

to control their energy usage



INCREASE SYSTEM EFFICIENCY

to control costs



BENEFITS

- ▶ Control long-term utility costs
- ▶ Flexibility for customers
- ▶ Improved infrastructure planning to spur innovations in clean energy





RI POWER SECTOR
TRANSFORMATION

THE JOURNEY

Rhode Island Clean Energy Policies



Systems Integration Rhode Island (SIRI)



Docket 4600



Four work streams



4.

WORK STREAMS



Utility Business Model

Distribution System
Planning

Grid Connectivity
Functionality

Beneficial Electrification of
Transportation & Heating



UTILITY BUSINESS MODEL



- ▶ What functions should the utility perform?
- ▶ How should the utility be compensated for each of the functions it performs?
- ▶ What is the appropriate role of performance metrics in utility compensation and which metrics should drive it?

DISTRIBUTION SYSTEM PLANNING

- ▶ What outcomes should distribution system planning promote?
- ▶ What aspects of utility operations should distribution system planning address?
- ▶ How accessible should distribution system planning be to third parties?

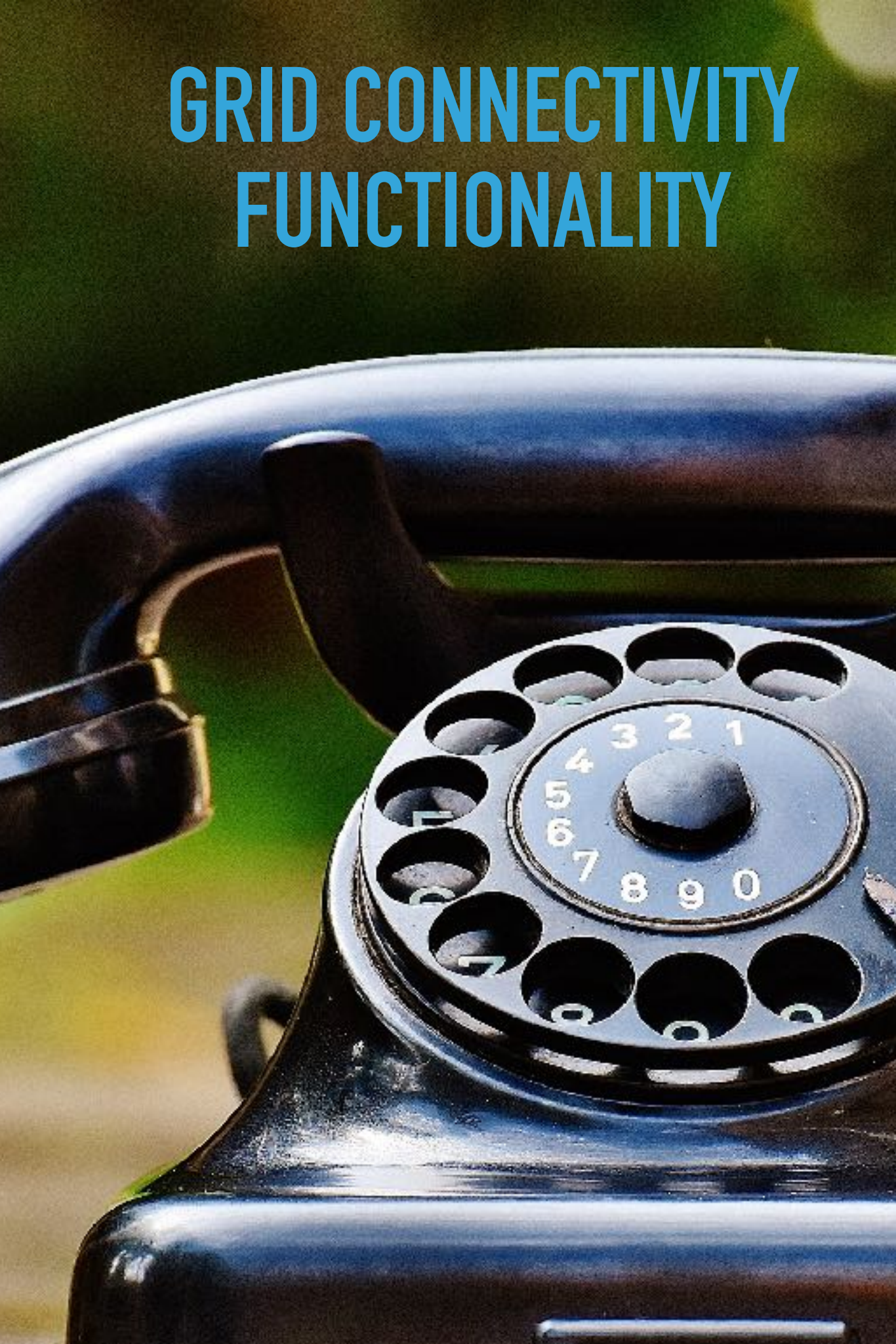


BENEFICIAL ELECTRIFICATION OF TRANSPORTATION AND HEATING

- ▶ What activities are important for the utility to consider and prioritize in developing a plan to encourage growth of beneficial electric vehicles and heating?
- ▶ Are there characteristics unique to the Rhode Island transportation and heating market that should be considered in answering the questions above?



GRID CONNECTIVITY FUNCTIONALITY



- ▶ Where are the grid-facing and customer-facing functionalities necessary to realize benefits for Rhode Island customers?
- ▶ What scenarios or deployment strategies provide most benefit for Rhode Islanders now and into the future?



REQUESTS &

NEXT STEPS



APRIL–MAY

Technical meetings

JUNE–SEPTEMBER

Facilitated engagement with
draft proposals

OCTOBER–NOVEMBER

Presentation of regulatory
proposals

JANUARY–JUNE 2018

Review of proposals through Public
Utilities Commission processes

LET'S ROW TOGETHER



- ▶ Join us at technical meetings
- ▶ Provide input & comments on straw proposal components June through October

- ▶ Written thoughts on work stream questions
- ▶ 4/24: UBM Meeting
- ▶ 5/9: Grid functionality meeting





STAY CONNECTED

dpuc.powertransformation@dpuc.ri.gov

http://www.ripuc.ri.gov/utilityinfo/electric/PST_home.html

DISCUSSION