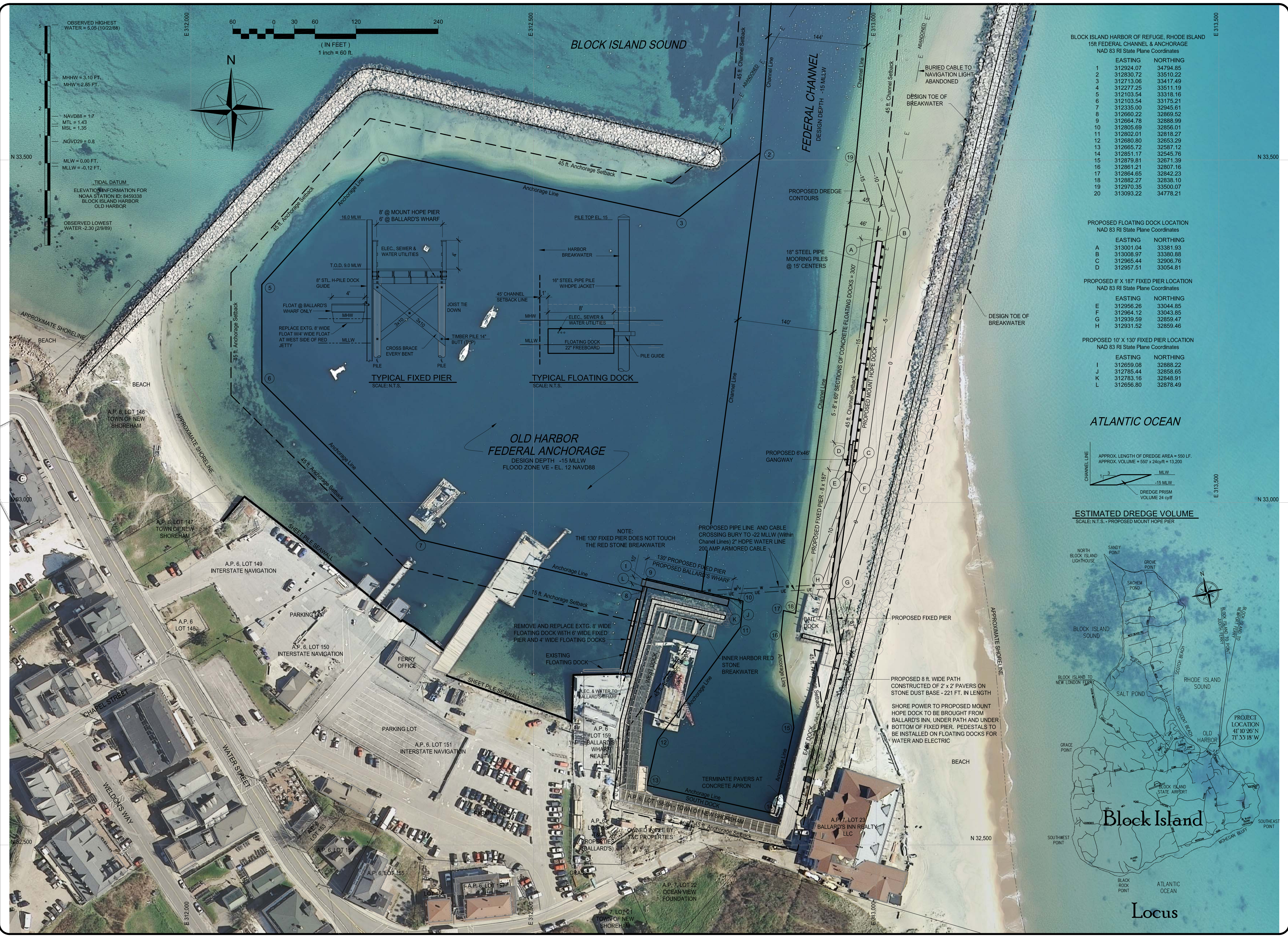


EXHIBIT B



**BLOCK ISLAND HARBOR OF REFUGE, RHODE ISLAND
15th FEDERAL CHANNEL & ANCHORAGE
NAD 83 RI State Plane Coordinates**

	EASTING	NORTHING
1	312924.07	34794.85
2	312830.72	33510.22
3	312713.06	33417.49
4	312277.25	33511.19
5	312103.54	33318.16
6	312103.54	33175.21
7	312335.00	32945.61
8	312865.22	32969.52
9	312664.78	32888.99
10	312805.69	32856.01
11	312802.01	32818.27
12	312680.80	32653.29
13	312665.72	32587.12
14	312851.17	32945.76
15	312879.81	32671.39
16	312861.21	32807.16
17	312864.65	32842.23
18	312882.27	32838.10
19	312970.35	33500.07
20	313093.22	34778.21

**PROPOSED FLOATING DOCK LOCATION
NAD 83 RI State Plane Coordinates**

	EASTING	NORTHING
A	313001.04	33381.93
B	313008.97	33380.88
C	312965.44	32969.76
D	312957.51	33054.81

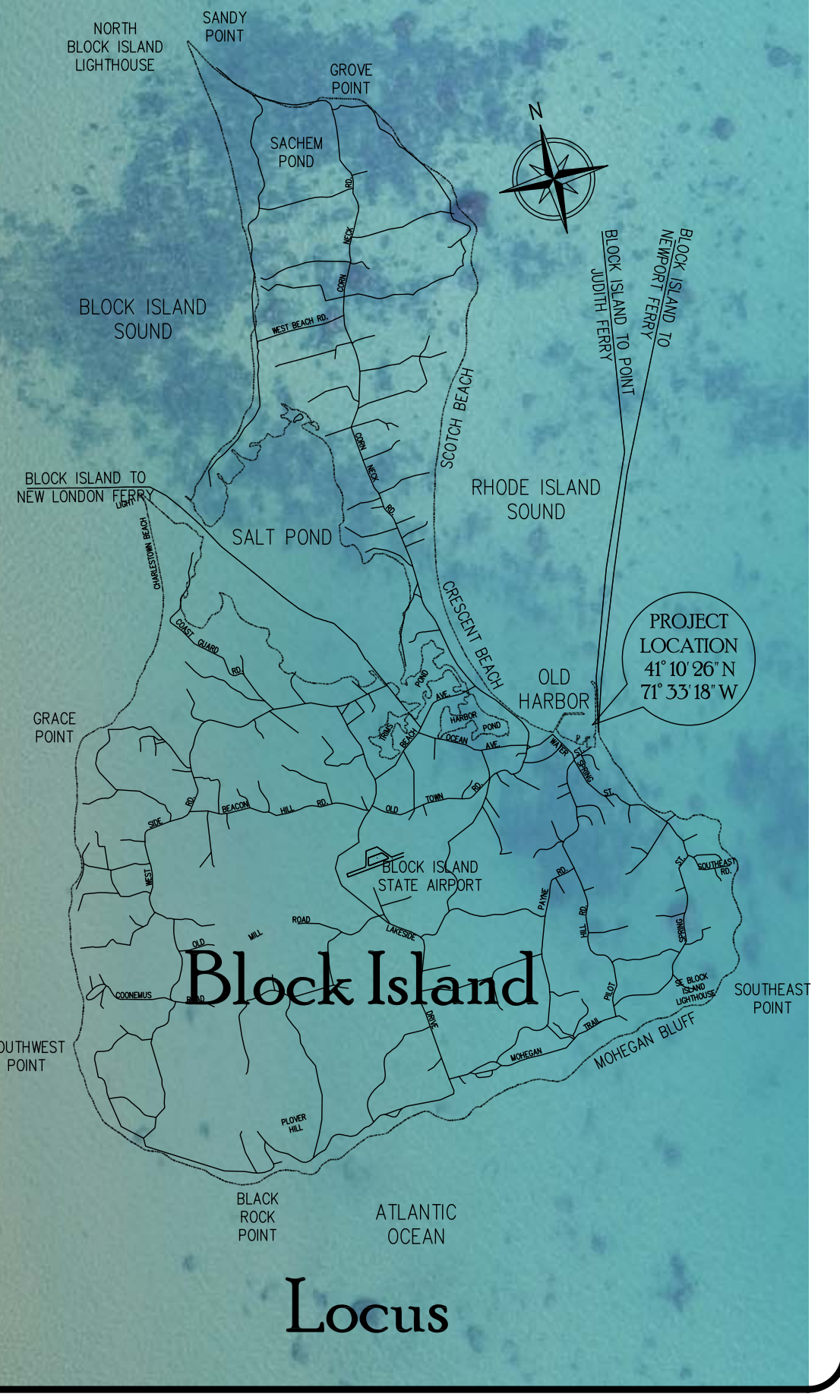
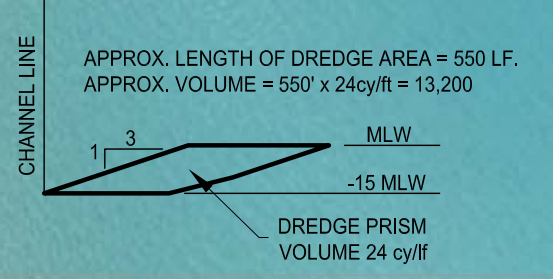
**PROPOSED 8' X 187' FIXED PIER LOCATION
NAD 83 RI State Plane Coordinates**

	EASTING	NORTHING
E	312956.26	33044.85
F	312964.12	33043.85
G	312939.59	32859.47
H	312931.52	32859.46

**PROPOSED 10' X 130' FIXED PIER LOCATION
NAD 83 RI State Plane Coordinates**

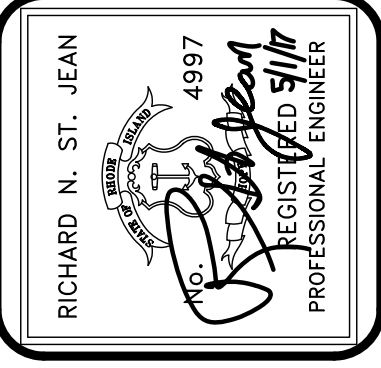
	EASTING	NORTHING
I	312659.08	32888.22
J	312785.44	32858.65
K	312783.16	32848.91
L	312656.80	32878.49

**ESTIMATED DREDGE VOLUME
SCALE: N.T.S. - PROPOSED MOUNT HOPE PIER**



2. EXTEND FIXED PIER @ MOUNT HOPE DOCK TO LAND DOCK UTILITY NOTES. APPROX. DREDGE VOLUME (32277) TO BE REMOVED. REMOVE 8' WIDE FLOATS @ RED JETTY & REPLACE WITH 6' FIXED DOCK AND 4' FLOATS. (3417)

Revisors:



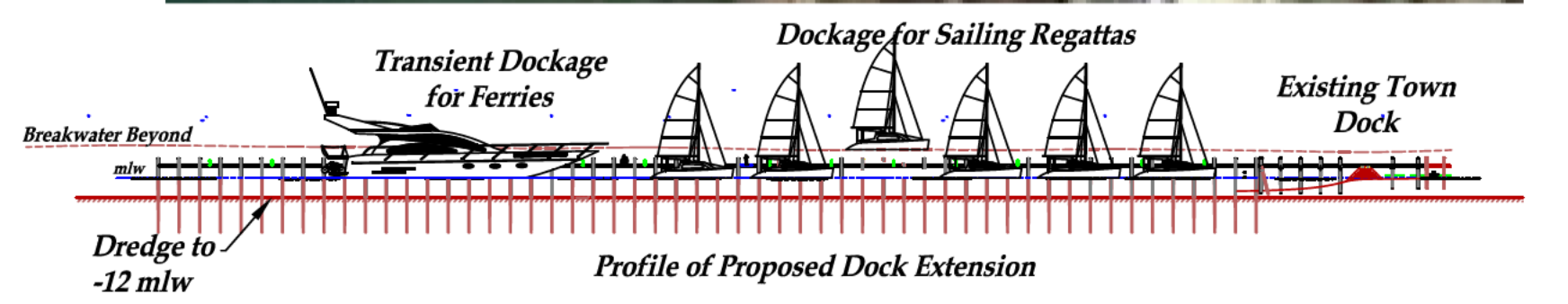
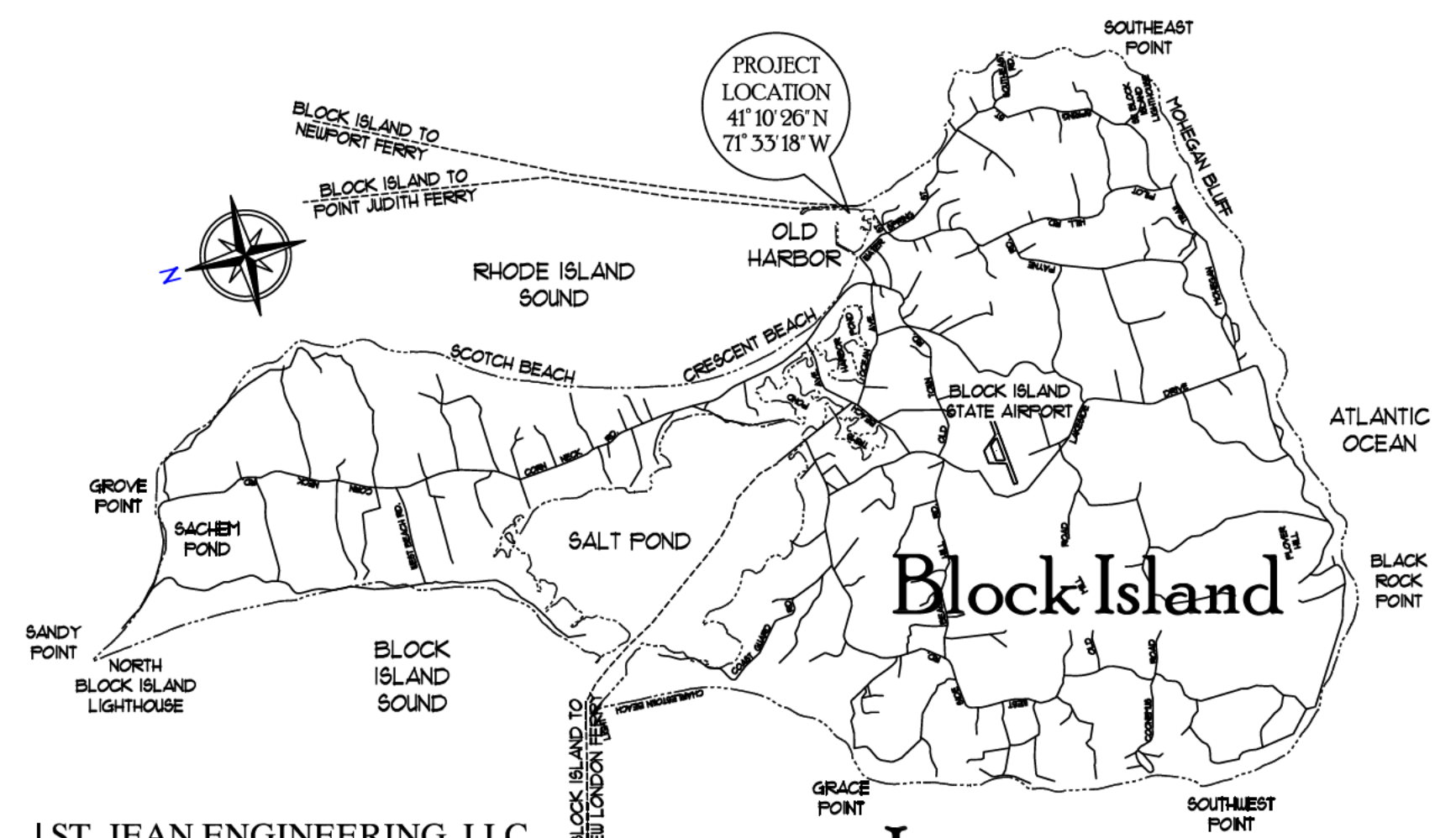
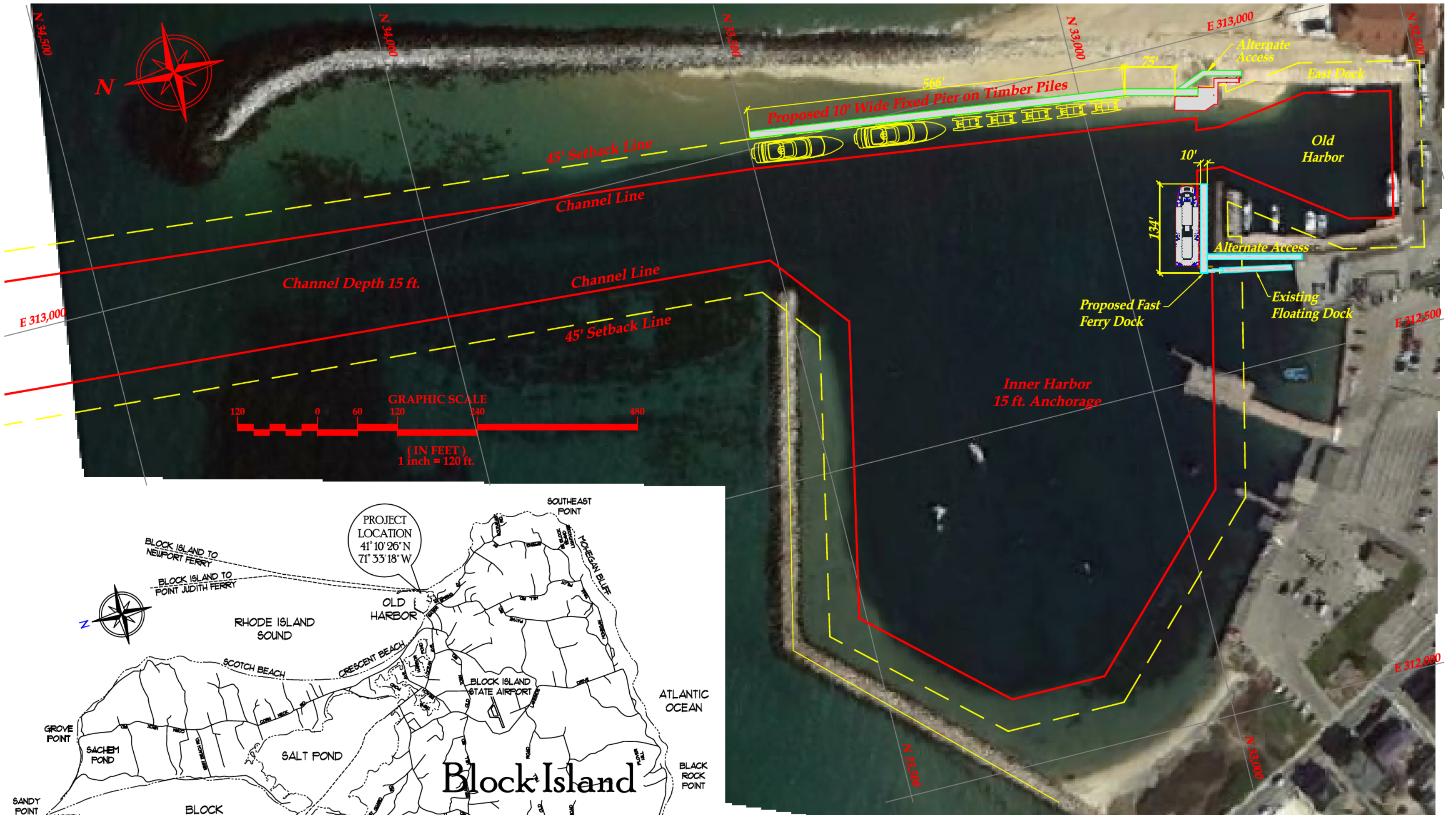
ST. JEAN ENGINEERING, LLC
Structural, Marine & Civil Engineering
1145 MIDDLE ROAD
EAST GREENWICH, RI 02818
Phone: (401)398-0999 email: st.jean.engineering@verizon.net

Drawn: R. ST. JEAN
Checked:
Scale:
DATE: 5/12/2017

**Proposed Dockage @ Old Harbor
New Shoreham, Rhode Island**
PREPARED FOR: BlueWater, LLC
P.O. Drawer --, Block Island, Rhode Island
**SOUTH & WEST DOCKS
PROPOSED REPAIRS**

DWG. NO.
C1
SHT. 1 OF 1

SCHEDULE A



ST. JEAN ENGINEERING, LLC
 CIVIL, MARINE AND STRUCTURAL
 CONSULTING ENGINEERING
 1145 Middle Road
 East Greenwich, RI 02818
 Phone: 401.398.0999
 st.jean.engineering@verizon.net

Locus