

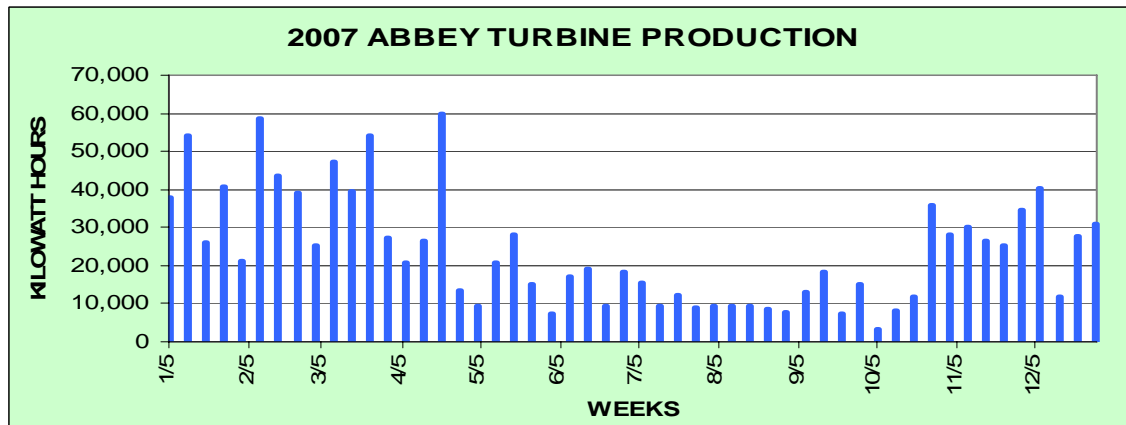
STATE OF RHODE ISLAND AND PROVIDENCE PLANTATIONS
PUBLIC UTILITIES COMMISSION

IN RE: NATIONAL GRID - TARIFF :
ADVICE FILING TO AMEND : DOCKET NO. 3904
R.I.P.U.C. NO. 1078-A :

JANUARY 9, 2008

The Abbey's 660 kW turbine has been generating for a year and a half as of December 31st and has produced over 2 million kilowatt hours (2,000 megawatt hours) of electricity.

We would like to see the timing changed in the twelve-month calculation proposed. As you can see below, January 1st is in the middle of the peak production period for wind generation. We suggest two schedules. The Vernal Equinox (March 21) for solar generation and the Autumnal Equinox (September 21) for wind turbines.



Note: the burden of net-metering to the rate-payers will not be the name-plate capacity of the generator (in our case 660 kilowatts). Our highest producing week of 60,000 kWhs was 54% of capacity. Our yearly average was only 22% of capacity, or 1,293 Megawatt Hours.

We have had innumerable inquiries from towns and organizations hoping to do similar projects. A 5 MW limit would likely stifle initiative. However, what I am noticing is that the towns are having a great deal of difficulty finding a single facility with enough of an electrical load. We use about 2.6 million kilowatt hours in our boarding school in a year as compared with around a million at Portsmouth High School. Though this is tangential to this docket, the local communities need to be able to aggregate their accounts.

Thank you for your consideration.

Br. Joseph Byron
Portsmouth Abbey