

A

Relocation Provides Access to Phase VI

- Pre-treatment/Compression Site
- Combined Cycle Power Site
- ⊗ 12 MW Plant

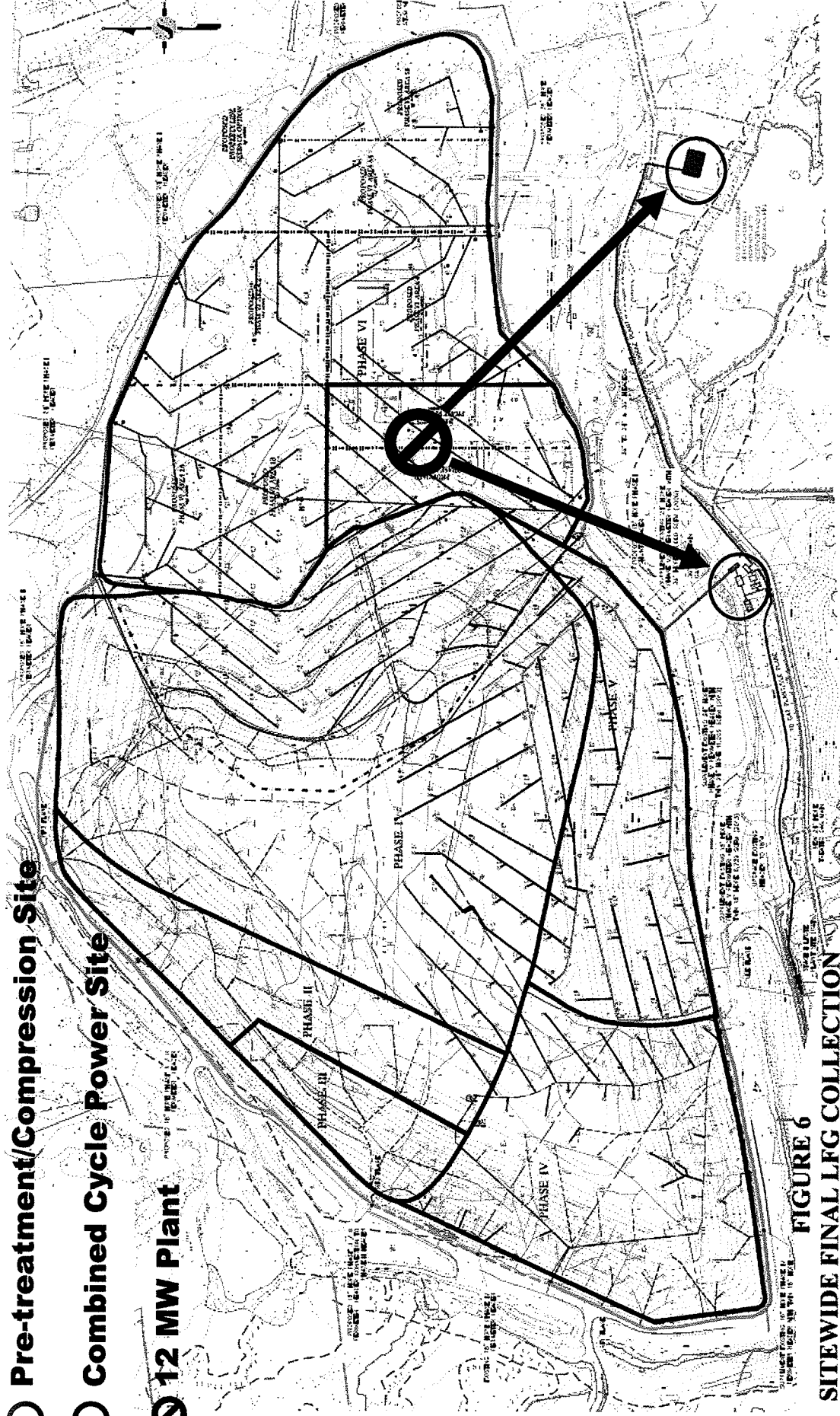
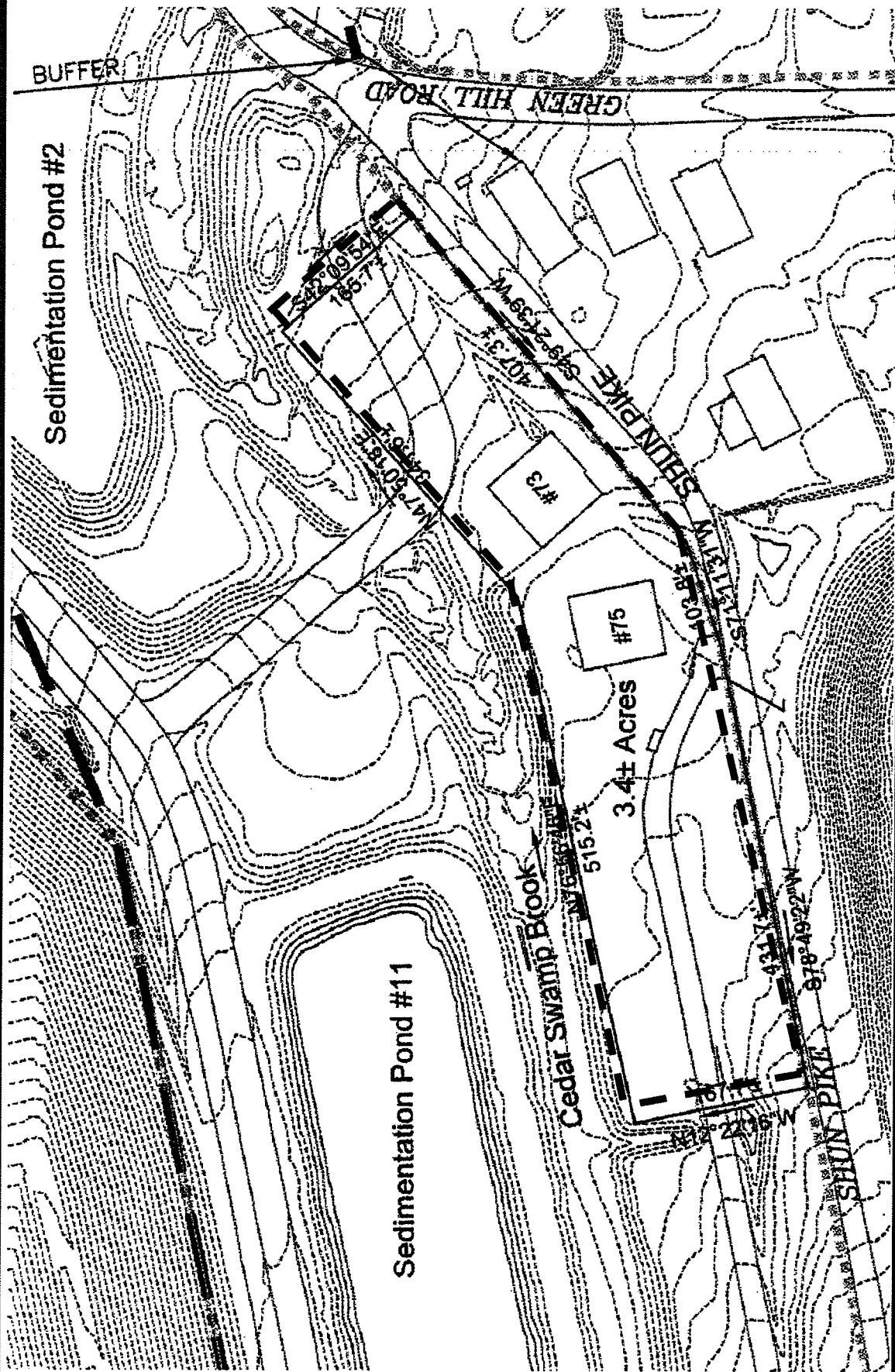


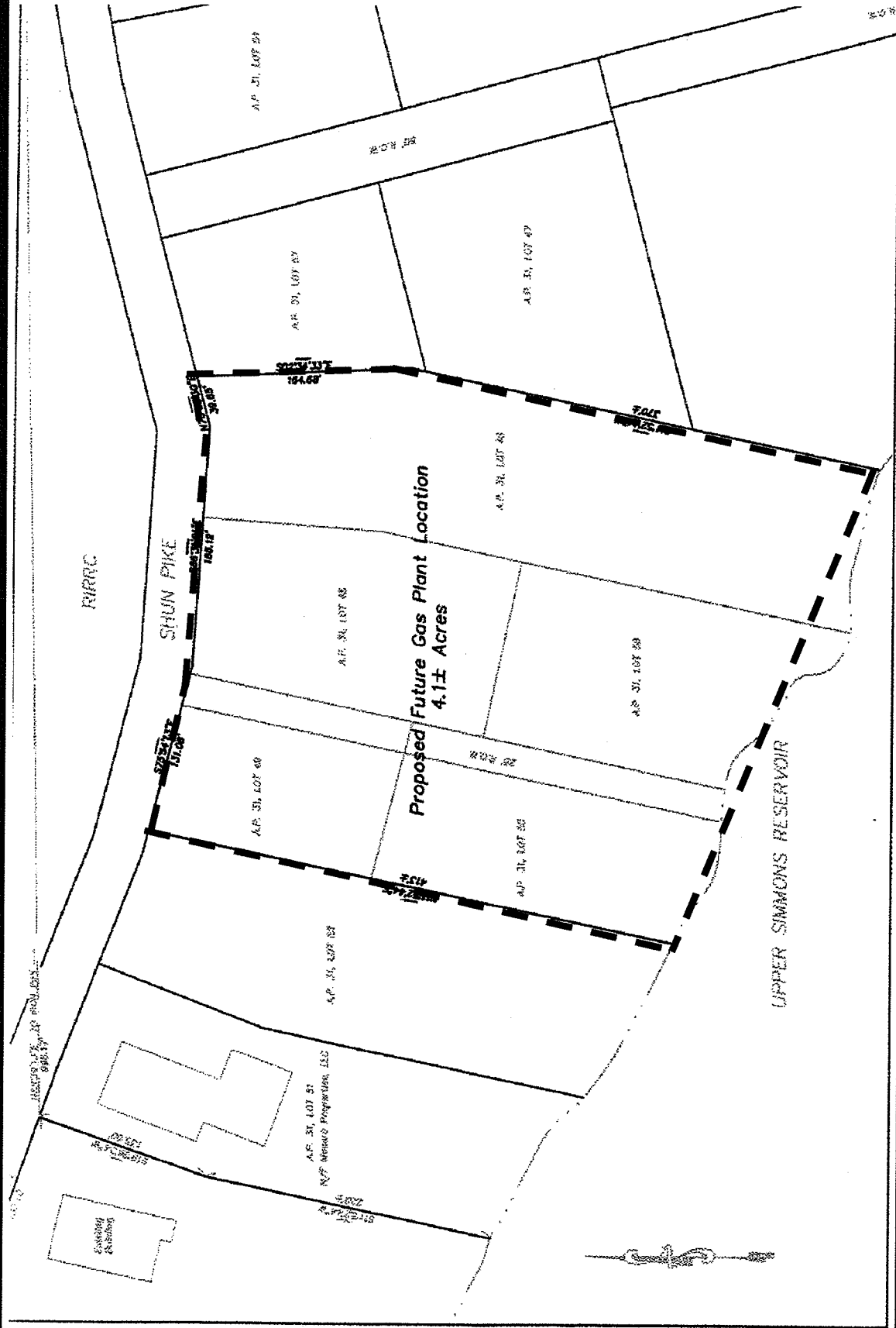
FIGURE 6
SITEWIDE FINAL LFG COLLECTION SYSTEM CONCEPT LAYOUT

HEADER LEGEND

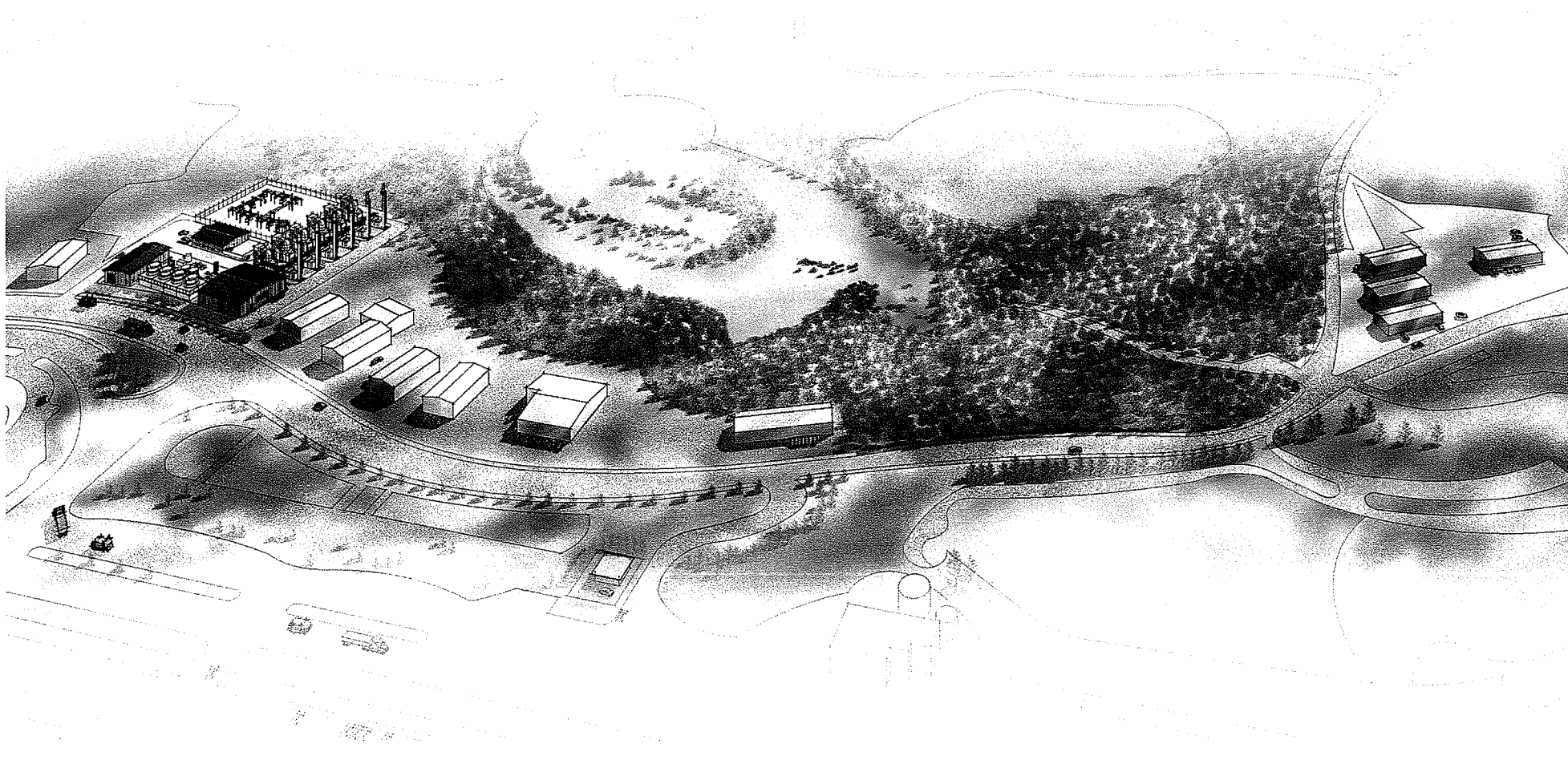
Pre-Treatment and Compression Site



Combined Cycle Power Plant Site



B



Ridgewood Renewable Power JOHNSTON COMBINED CYCLE LFG PLANT





No.	DESCRIPTION	BY	CHKD	APPROV.	DATE	No.	DESCRIPTION	BY	CHKD	APPROV.	DATE
	REVISION						REVISION				

SEAL

CONSTRUCTION ISSUE	DESCRIPTION	DATE
ISSUED		
REVISED		
APPROVED		
PROJECT NUMBER		
PROJECT NAME		

THE INFORMATION HEREON IS CONFIDENTIAL PROPERTY OF CATERPILLAR & BURNS & MCDONNELL, INC. THE INFORMATION MAY NOT BE REPRODUCED BY ANY MEANS, INCLUDING PHOTOCOPYING, ELECTRONIC RECORDING, OR BY ANY INFORMATION STORAGE AND RETRIEVAL SYSTEM, WITHOUT THE WRITTEN PERMISSION OF CATERPILLAR & BURNS & MCDONNELL, INC.

JACOBS
 625 WILSON BLVD
 SUITE 1000
 LOS ANGELES, CA 90017
 TEL 213-231-1300

RIDGEWOOD RENEWABLE POWER JOHNSTON COMBINED CYCLE LFG PLANT

PROPOSED ROUTE OF 115KV TIE-LINE
 RIDGEWOOD POWER 115KV SUBSTATION TO 115KV TRANSMISSION LINE

CUSTOMER JOB NO. CB170365
 CATERPILLAR & BURNS & MCDONNELL, INC. JOB NO. 170365.010.001.0001

SCALE: 1"=100'-0"

CAD No. 170365
 DWG No. E-SK-007
 REV A