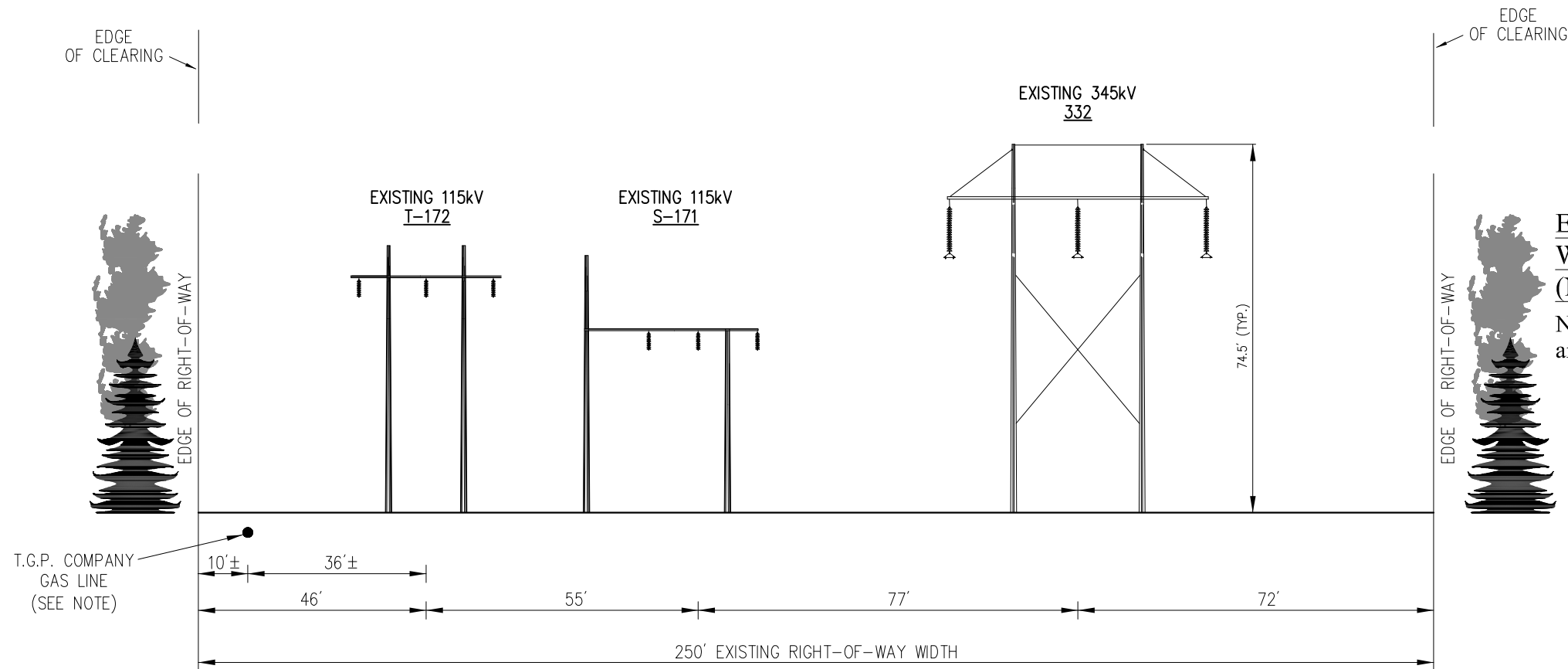
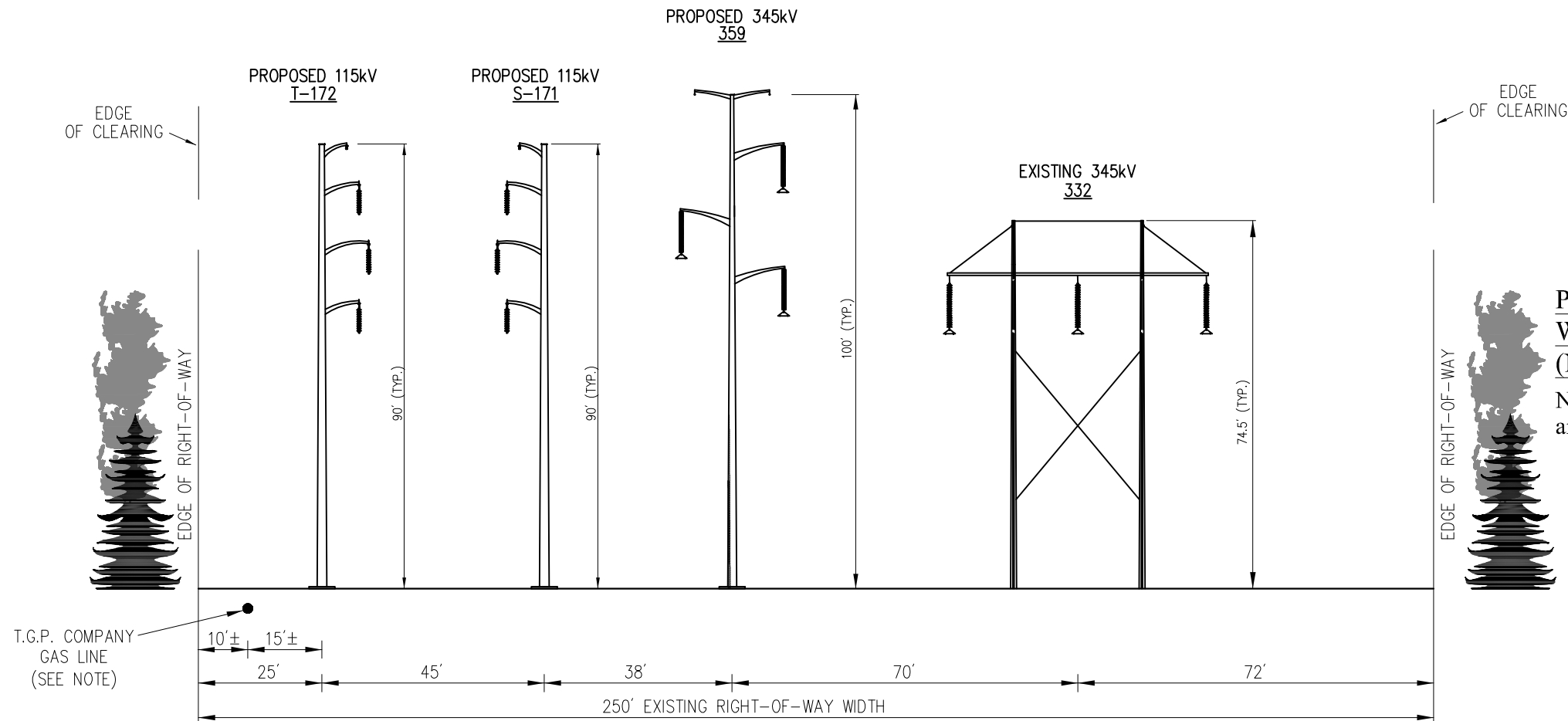


NOTE:
 PRESENCE OF TGP GAS LINE WITHIN ROW IS
 INTERMITTENT ALONG THE LENGTH OF THE
 ROW. LOCATION OF GAS LINE RELATIVE TO
 EDGE OF ROW IS VARIABLE.



Existing-Typical View Looking South Between
 West Farnum Substation and Vicinity of Providence Street
 (No 12kV or 23kV Line on R.O.W.)
 North Smithfield, Smithfield, Johnston, Cranston
 and West Warwick, Rhode Island



Proposed-Typical View Looking South Between
 West Farnum Substation and Vicinity of Providence Street
 (No 12kV or 23kV Line on R.O.W.)
 North Smithfield, Smithfield, Johnston, Cranston
 and West Warwick, Rhode Island

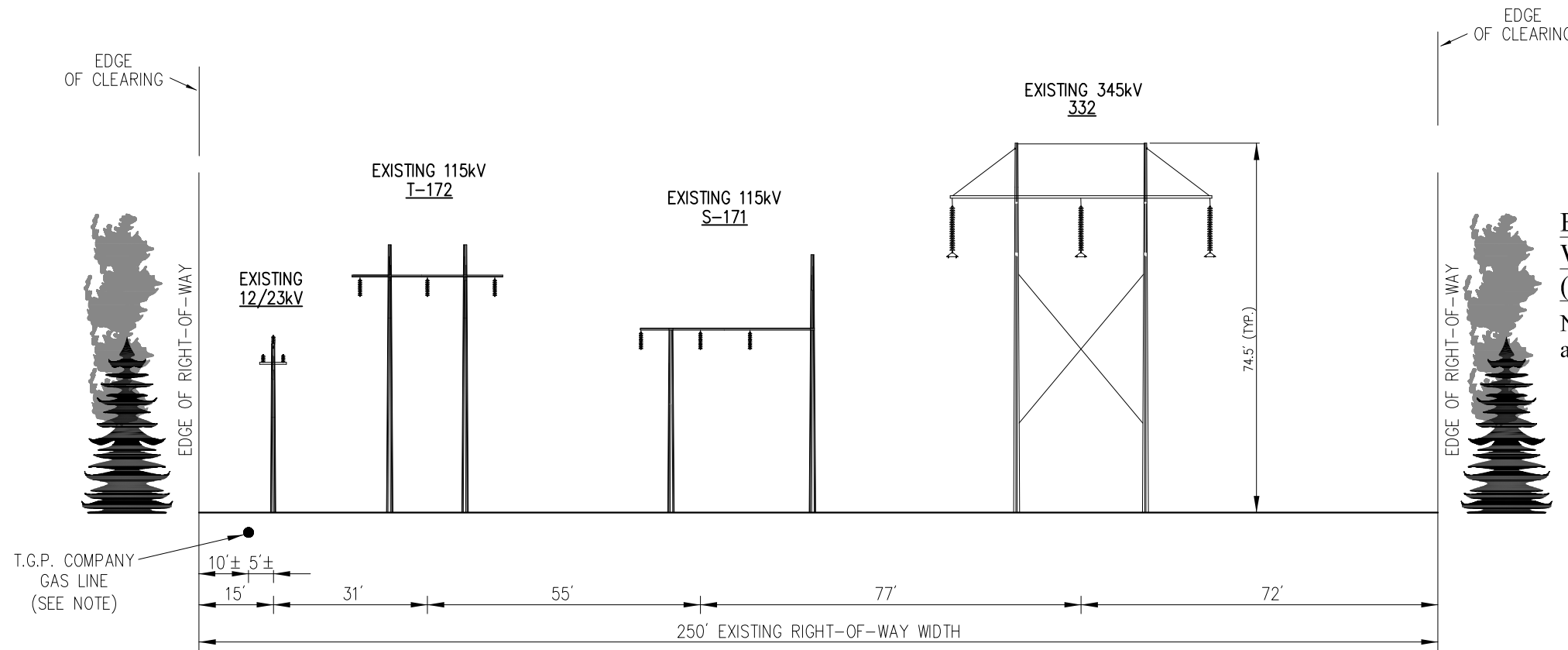
nationalgrid

Vanasse Hangen Brustlin, Inc.

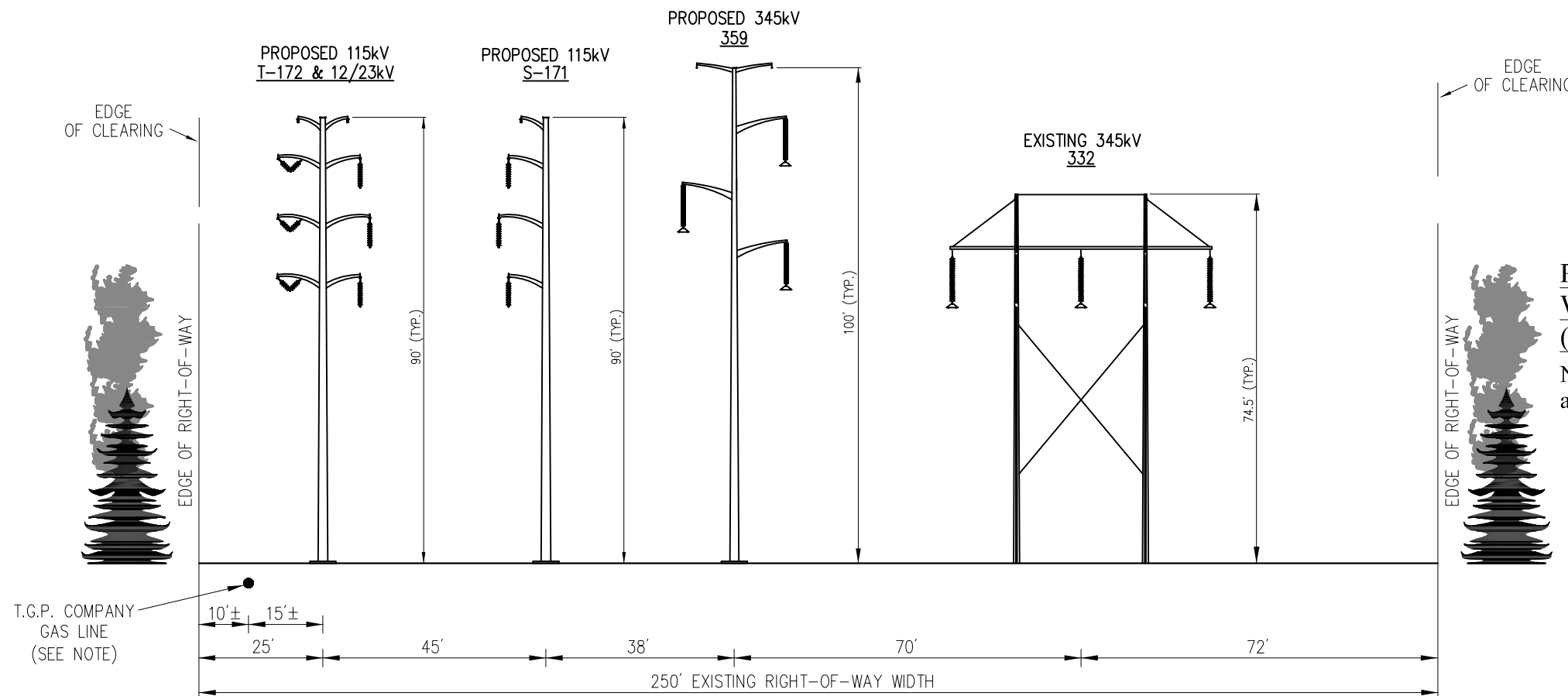
Figure 4-2
 Typical R.O.W. Cross-Section Sheet 1 of 5
 Rhode Island Reliability Project

Source:
 National Grid, 2008.
 Revised:
 June 23, 2009

NOTE:
 PRESENCE OF TGP GAS LINE WITHIN ROW IS
 INTERMITTENT ALONG THE LENGTH OF THE
 ROW. LOCATION OF GAS LINE RELATIVE TO
 EDGE OF ROW IS VARIABLE.



**Existing-Typical View Looking South Between
 West Farnum Substation and Vicinity of Providence Street
 (12kV or 23kV Line on R.O.W.)**
 North Smithfield, Smithfield, Johnston, Cranston
 and West Warwick, Rhode Island



**Proposed-Typical View Looking South Between
 West Farnum Substation and Vicinity of Providence Street
 (12kV or 23kV Line on R.O.W.)**
 North Smithfield, Smithfield, Johnston, Cranston
 and West Warwick, Rhode Island

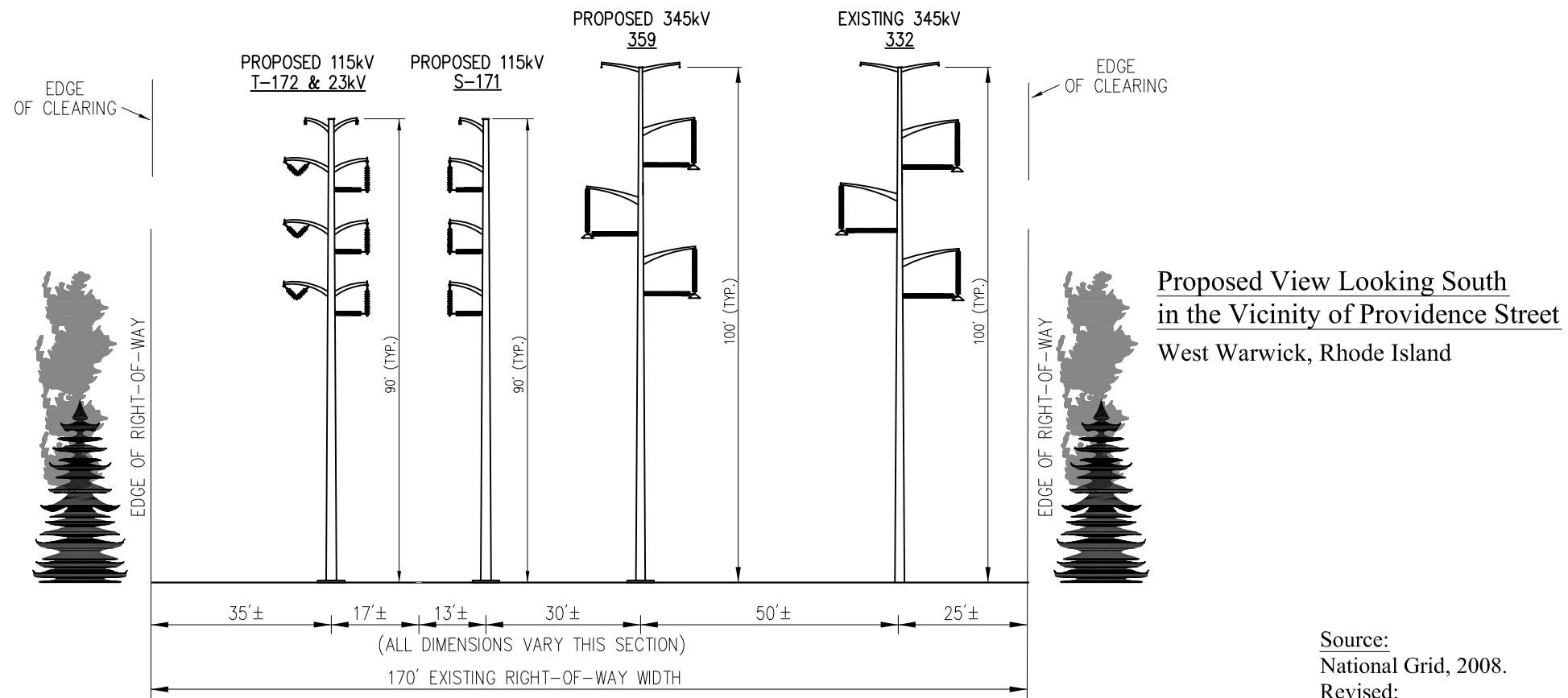
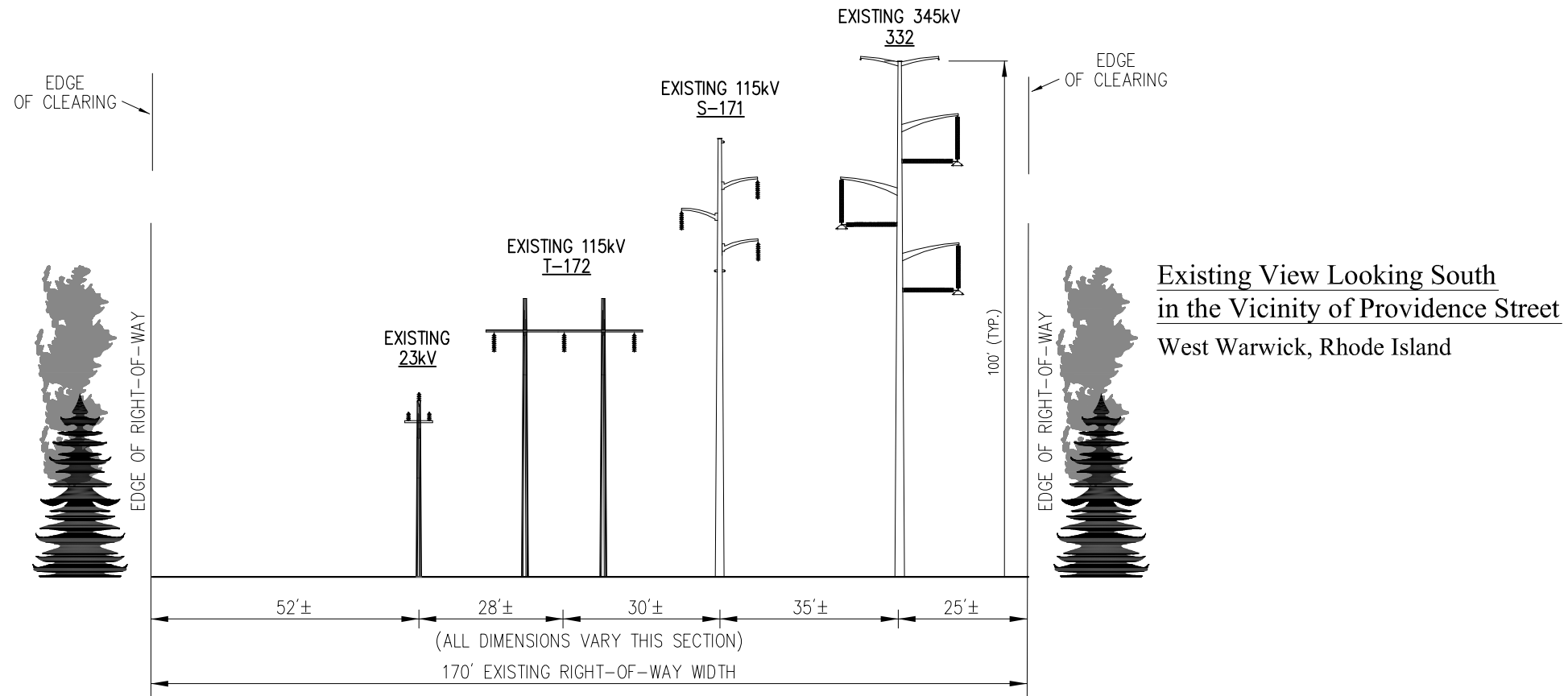
nationalgrid

Vanasse Hangen Brustlin, Inc.

Figure 4-2

Typical R.O.W. Cross-Section Sheet 2 of 5
 Rhode Island Reliability Project

Source:
 National Grid, 2008.
 Revised:
 June 23, 2009



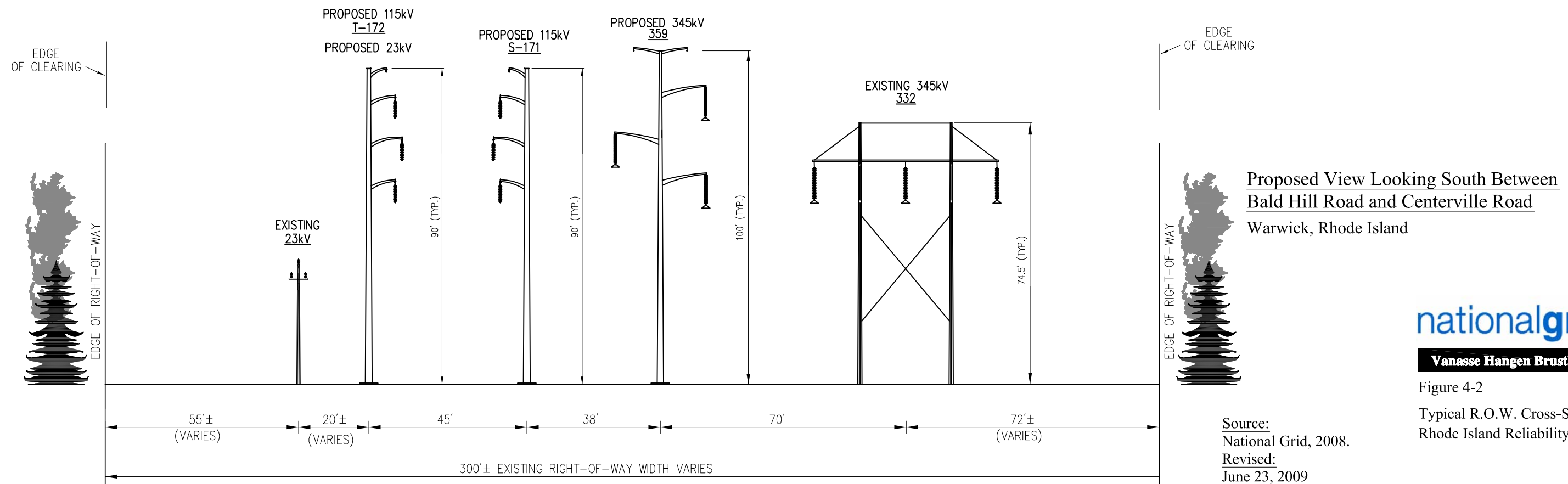
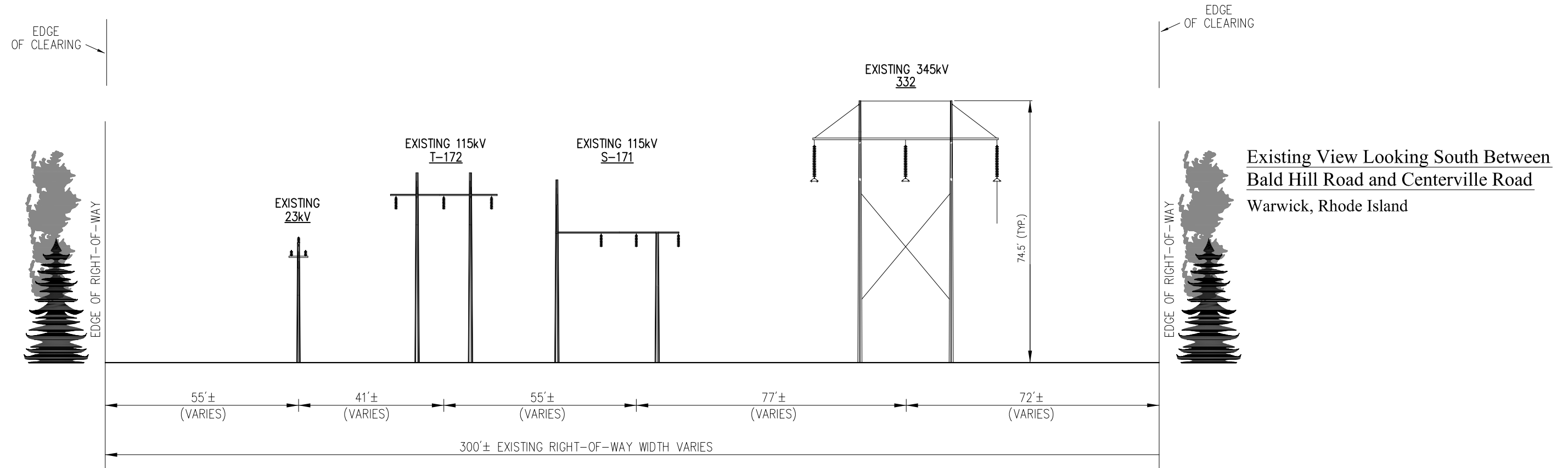
nationalgrid

Vanasse Hangen Brustlin, Inc.

Figure 4-2

Typical R.O.W. Cross-Section Sheet 3 of 5
Rhode Island Reliability Project

Source:
National Grid, 2008.
Revised:
June 23, 2009



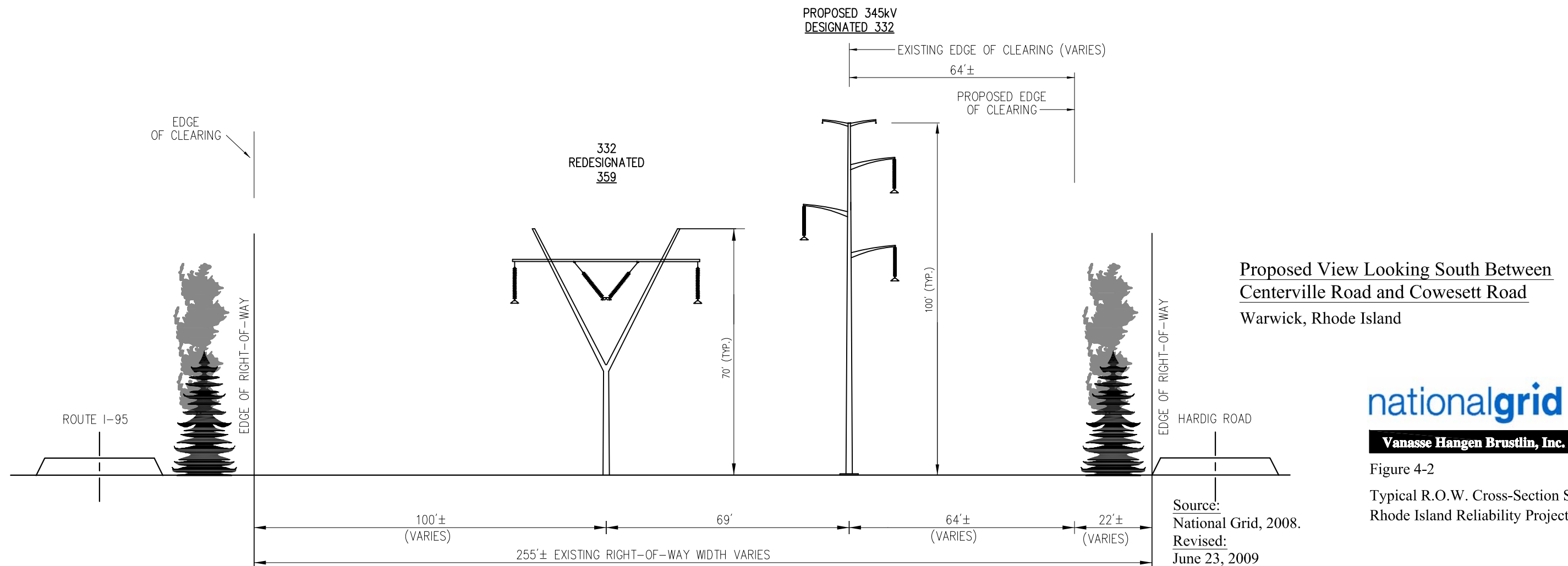
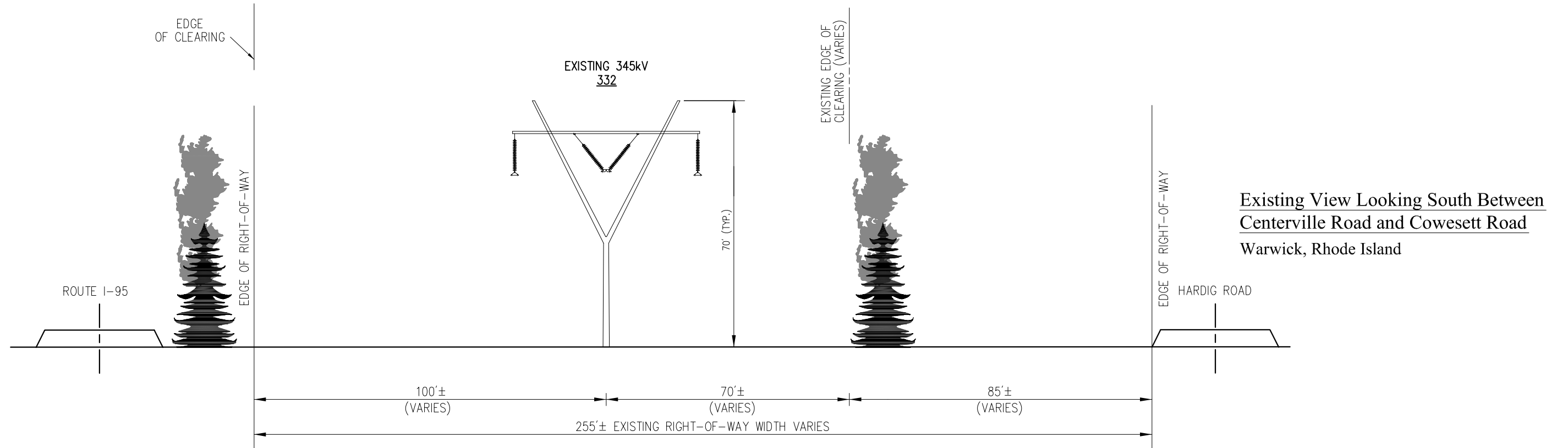
nationalgrid

Vanasse Hangen Brustlin, Inc.

Figure 4-2

Typical R.O.W. Cross-Section Sheet 4 of 5
Rhode Island Reliability Project

Source:
National Grid, 2008.
Revised:
June 23, 2009



nationalgrid

Vanasse Hangen Brustlin, Inc.

Figure 4-2

Typical R.O.W. Cross-Section Sheet 5 of 5
Rhode Island Reliability Project

Source:
National Grid, 2008.
Revised:
June 23, 2009