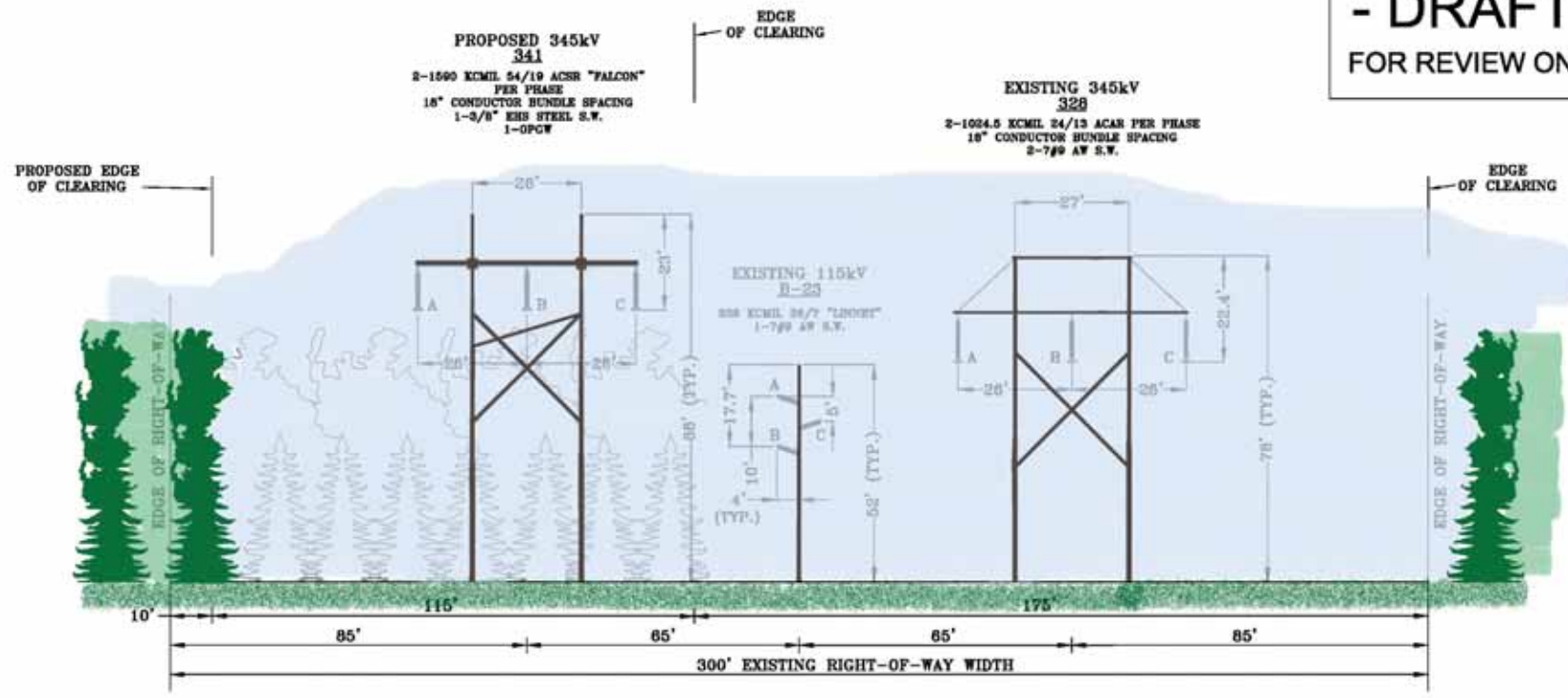


**- DRAFT -
 FOR REVIEW ONLY**



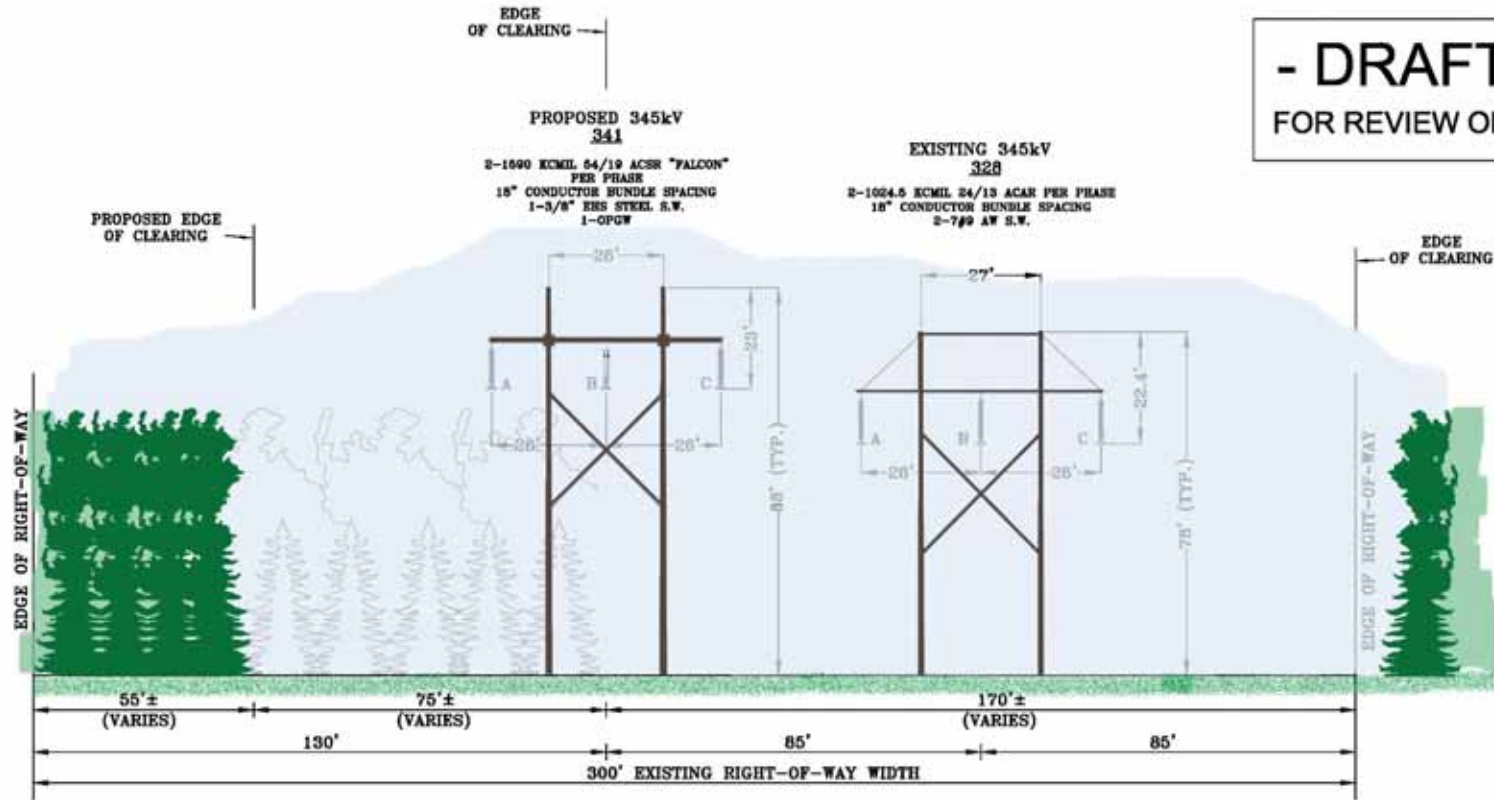
LOOKING WEST

nationalgrid

NEW ENGLAND EAST WEST SOLUTIONS (NEES)
 WEST FARNUM TO RI/CT S/L
 TYPICAL R.O.W. CROSS SECTION
 SECTION 1 OF 4
 PROPOSED LINE PHASING

SCALE: NONE REV: B DATE: 7-16-08

**- DRAFT -
 FOR REVIEW ONLY**



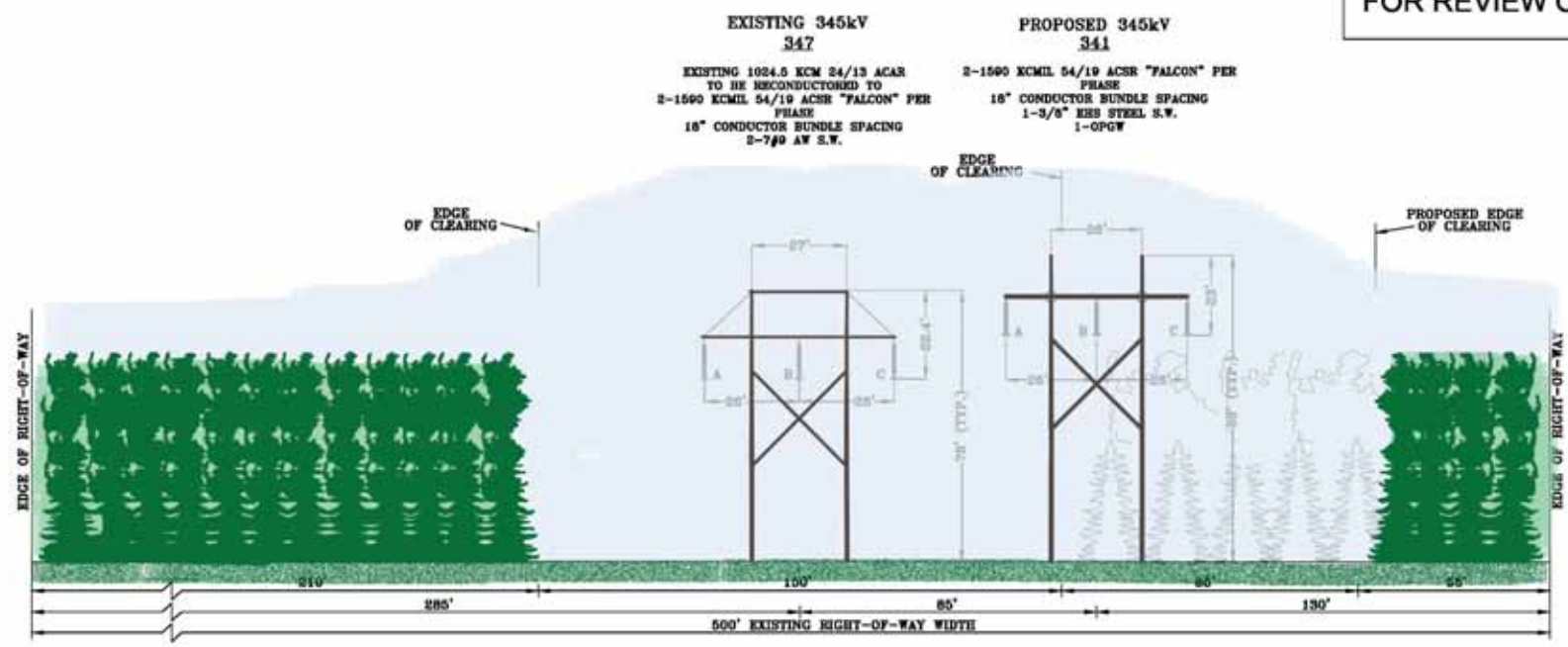
LOOKING WEST

nationalgrid

NEW ENGLAND EAST WEST SOLUTIONS (NEEWS)
 WEST FARNUM TO RI/CT S/L
 TYPICAL R.O.W. CROSS SECTION
 SECTION 2 OF 4
 PROPOSED LINE PHASING

SCALE: NONE REV: B DATE: 7-16-08

**- DRAFT -
 FOR REVIEW ONLY**



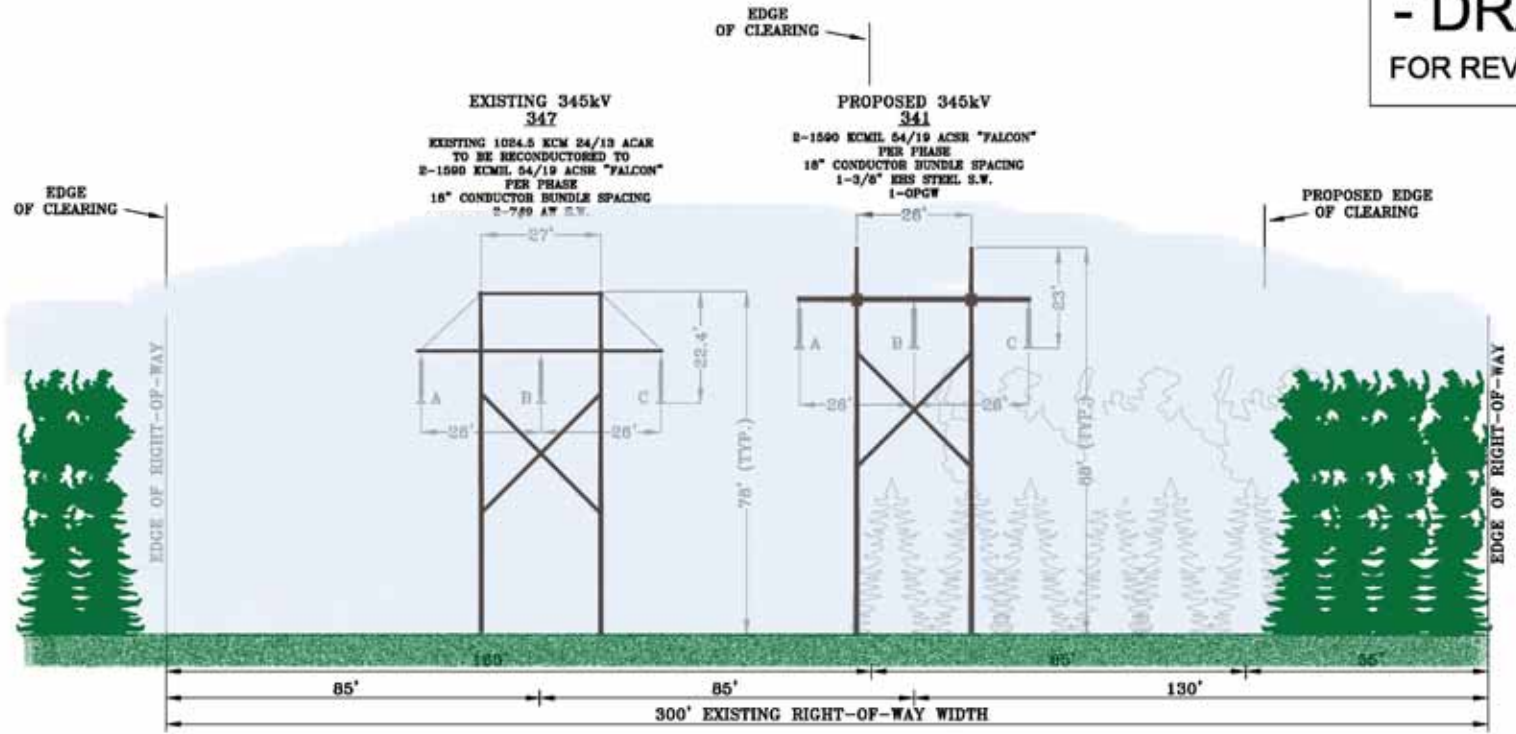
LOOKING WEST

nationalgrid

NEW ENGLAND EAST WEST SOLUTIONS (NEEWS)
 WEST FARNUM TO RI/CT S/L
 TYPICAL R.O.W. CROSS SECTION
 SECTION 3 OF 4
 PROPOSED LINE PHASING

SCALE: NONE REV: B DATE: 7-16-08

**- DRAFT -
 FOR REVIEW ONLY**



LOOKING WEST

nationalgrid

NEW ENGLAND EAST WEST SOLUTIONS (NEEWS)
 WEST FARNUM TO RI/CT S/L
 TYPICAL R.O.W. CROSS SECTION
 SECTION 4 OF 4
 PROPOSED LINE PHASING

SCALE: NONE REV: B DATE: 7-16-08