



100 Westminster Street, Suite 1500
Providence, RI 02903-2319

p: 401-274-2000 f: 401-277-9600
hinckleyallen.com

Adam M. Ramos
aramos@hinckleyallen.com
Direct Dial: 401-457-5164

October 22, 2021

VIA E-MAIL AND HAND DELIVERY

Emma.Rodvien@puc.ri.gov

Emma Rodvien, Coordinator
Energy Facility Siting Board
89 Jefferson Boulevard
Warwick, Rhode Island 02888

Re: Docket No. SB-2021-01 – In Re: Revolution Wind, LLC’s Application to Construct and Alter Major Energy Facilities in North Kingstown, Rhode Island

Dear Ms. Rodvien:

Enclosed please find an original and four copies of Revolution Wind, LLC’s (“Revolution Wind”) Responses to the Energy Facility Siting Board’s (the “EFSB”) Record Requests, issued on October 12, 2021.

This filing includes Revolution Wind’s partial responses to the EFSB’s Record Requests, specifically Record Requests 1, 11 and 12. On October 19, 2021, the EFSB granted an extension to October 22, 2021, for Record Requests 1, 11 and 12, and to October 26, 2021, for Record Requests 2, 6 and 7, which will be provided on a rolling basis as they are complete.


This filing includes a Motion for Protective Treatment of Confidential Information in accordance with R.I. Gen. Laws § 38-2-2(4) for portions of Revolution Wind’s response to Record Request 1, Confidential Attachment RR1-1, which is a site map that includes the location of certain historically and culturally sensitive resources, and Revolution Wind’s response to Record Request 11, which provides a description of these resources. For the reasons stated in the Motion for Protective Treatment, Revolution Wind seeks protection from public disclosure for these materials because they contain confidential information protected from disclosure under federal law. Accordingly, Revolution Wind has provided the EFSB with an original and three complete, unredacted copies of the confidential documents in a sealed envelope marked “**Contains Privileged and Confidential Information – Do Not Release,**” and has included three redacted copies of the document for the public filing.

October 22, 2021

Page 2

Thank you for your attention to this matter.

Very truly yours,



Adam M. Ramos



Robin L. Main

AMR:cw
Enclosures

cc: SB-2021-01 Service List (via e-mail)
Meredith Brady (via hand delivery)

SB-2021-01 Revolution Wind, LLC Application for Major Energy Facility**Updated October 19, 2021** (by HA&S)

Name/Address	E-mail
Chairman Ronald Gerwatowski (PUC)	Ronald.Gerwatowski@puc.ri.gov ;
Acting Director Terry Gray (DEM)	Terry.gray@dem.ri.gov;
Associate Director Meredith Brady (DOA)	Meredith.brady@doa.ri.gov ;
Emma Rodvien (PUC)	Emma.Rodvien@puc.ri.gov ;
Patricia Lucarelli (PUC)	Patricia.lucarelli@puc.ri.gov ;
Suzanne Amerault (DEM)	Suzanne.Amerault@dem.ri.gov ;
Maria Mignanelli (DOA)	maria.mignanelli@doa.ri.gov ;
Adam Ramos (Hinckley, Allen, & Snyder, LLP)	aramos@hinckleyallen.com ;
Robin Main (Hinckley, Allen, & Snyder, LLP)	rmain@hinckleyallen.com ;
Christine Dieter (Hinckley, Allen, & Snyder, LLP)	cdieter@hinckleyallen.com ;
Marvin Bellis (Eversource)	marvin.bellis@eversource.com ;
Charles R. Scott	chsco@orsted.com ;
Jeannette Alyward	jalyward@northkingstown.org ;
Town of North Kingstown Town Council	TownCouncil@northkingstown.org ;
Matt Callaghan	matt@callaghanlawri.com ;
George Watson (Robinson Cole)	Gwatson@rc.com ;
Mark Rielly (National Grid)	Mark.rielly@nationalgrid.com ;
Rachel Thomas (National Grid)	Rachel.Thomas@nationalgrid.com ;
Commissioner Nicholas Ucci (OER)	Nicholas.Ucci@energy.ri.gov ;
Christopher Kearns (OER)	Christopher.Kearns@energy.ri.gov ;
Carrie Gill (OER)	Carrie.Gill@energy.ri.gov ;
Becca Trietch (OER)	Becca.Trietch@energy.ri.gov ;
Todd Bianco (PUC)	Todd.Bianco@puc.ri.gov ;
Cindy Wilson-Frias (PUC)	Cynthia.Wilsonfrias@puc.ri.gov ;
Alan Nault (PUC)	Alan.nault@puc.ri.gov ;
Luly Massaro (PUC)	Luly.Massaro@puc.ri.gov ;
Christy Hetherington (DPUC)	Christy.hetherington@dpuc.ri.gov ;
John Bell (DPUC)	John.bell@dpuc.ri.gov ;
Thomas Kogut (DPUC)	thomas.kogut@dpuc.ri.gov ;
Maggie Hogan (DPUC)	Margaret.l.hogan@dpuc.ri.gov ;
Matthew Ouellette (DOT)	Matthew.Ouellette@dot.ri.gov ;

Robert Rocchio (DOT)	Robert.Rocchio@dot.ri.gov ;
Joseph Bucci (DOT)	Joseph.Bucci@dot.ri.gov ;
Jill Nascimento (DOT)	Jill.Nascimento@dot.ri.gov ;
John Paul Loether (HPHC)	johnpaul.loether@preservation.ri.gov ;
Jeffrey Emidy (HPHC)	jeffrey.emidy@preservation.ri.gov ;
Charlotte Taylor (HPHC)	Charlotte.Taylor@preservation.ri.gov ;
Nicole Lafontaine (North Kingstown Planning Board)	NLaFontaine@northkingstown.org ;
Roberta Groch (DOA)	Roberta.Groch@doa.ri.gov ;
Kevin Nelson (DOA)	Kevin.Nelson@doa.ri.gov ;
Jennifer Sternick (DOA)	Jennifer.Sternick@doa.ri.gov ;
Nancy Lavin (Providence Business News)	Lavin@pbn.com ;
Christian Capizzo (Partridge Snow & Hahn LLP)	ccapizzo@psh.com ;
Peter Shattuck (Anbaric)	pshattuck@anbaric.com
Nicole DiPaolo (National Wildlife Foundation)	DiPaoloN@nwf.org ;
Christina Hoefsmit (DEM)	Christina.Hoefsmit@dem.ri.gov ;

EFSB Record Request 1

Request:

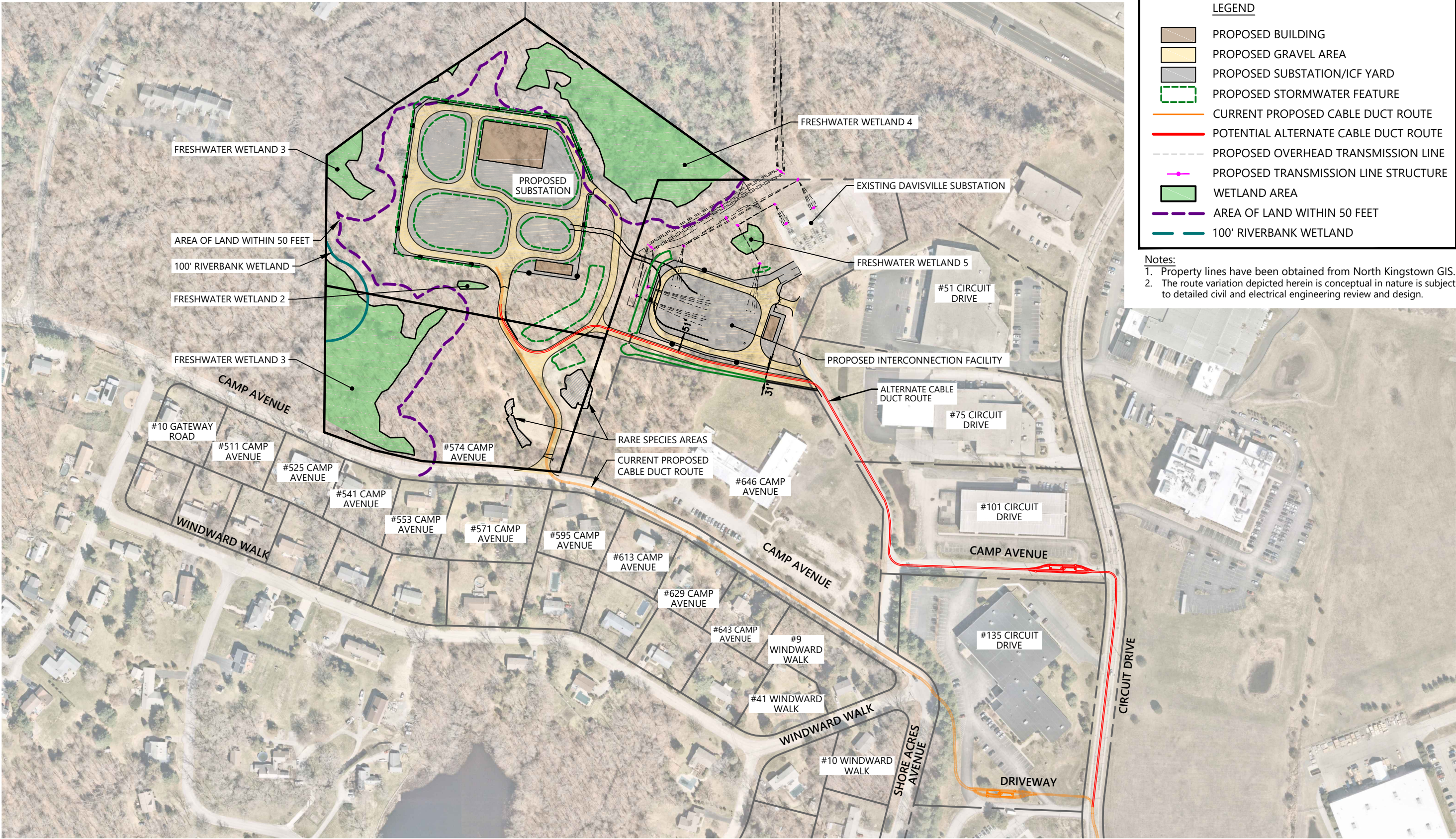
Provide a map depicting the line from the access road showing the impact to wetlands, vernal pools, Native American Resources. Provide two documents, one with the Native American Resources included and one without the Native American Resources included.

Response:

Please see Attachment Revolution Wind EFSB RR1-1.

\\vhb\gb\proj\Providence\73032.01 RWF-Export Cable (2)\Graphics\FIGURES\Camp Ave\Camp Ave Plan.dwg

Redacted to Preserve Confidential Information



Revolution
Wind

Powered by
Ørsted &
Eversource

Revolution Wind
North Route Variation
North Kingstown, RI

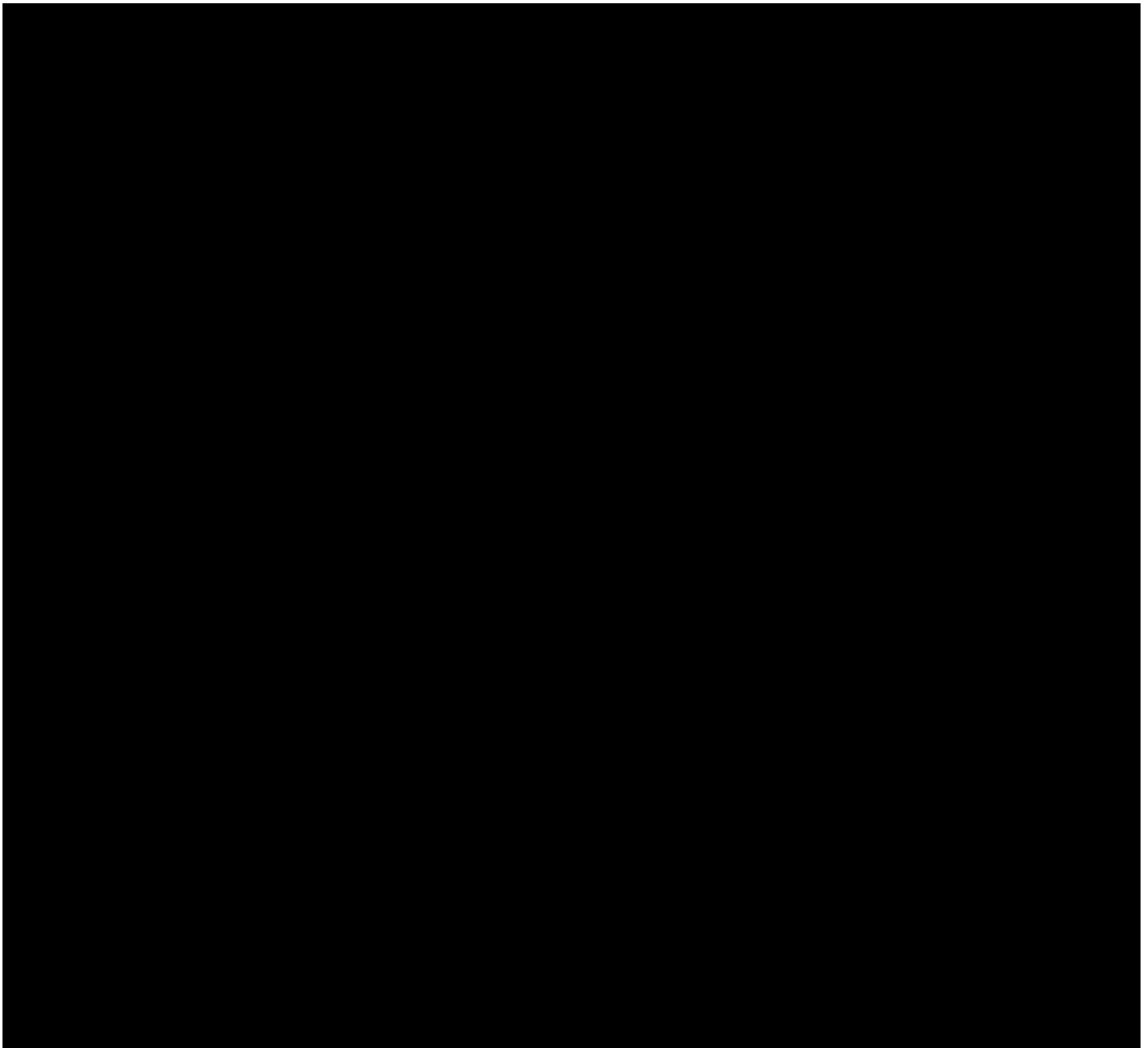
Attachment
Revolution Wind
EFSB RR1-1

REDACTED
EFSB Record Request 11

Request:

Elaborate on the Native American archeological site.

Response:



REDACTED



Revolution Wind, LLC Application to Construct a Major Energy Facility
EFSB Docket No. SB-2021-01
Revolution Wind, LLC's
Response to the Energy Facility Siting Board's Record Requests, Set 1
Issued on October 12, 2021

REDACTED



EFSB Record Request 12

Request:

Provide a map of any site along Camp Avenue of the Access Road that would be an archeological site.

Response:

Please see Attachment Revolution Wind EFSB RR1-1. No other sites were identified along Camp Avenue or any other portions of the Onshore Transmission Cable Route.