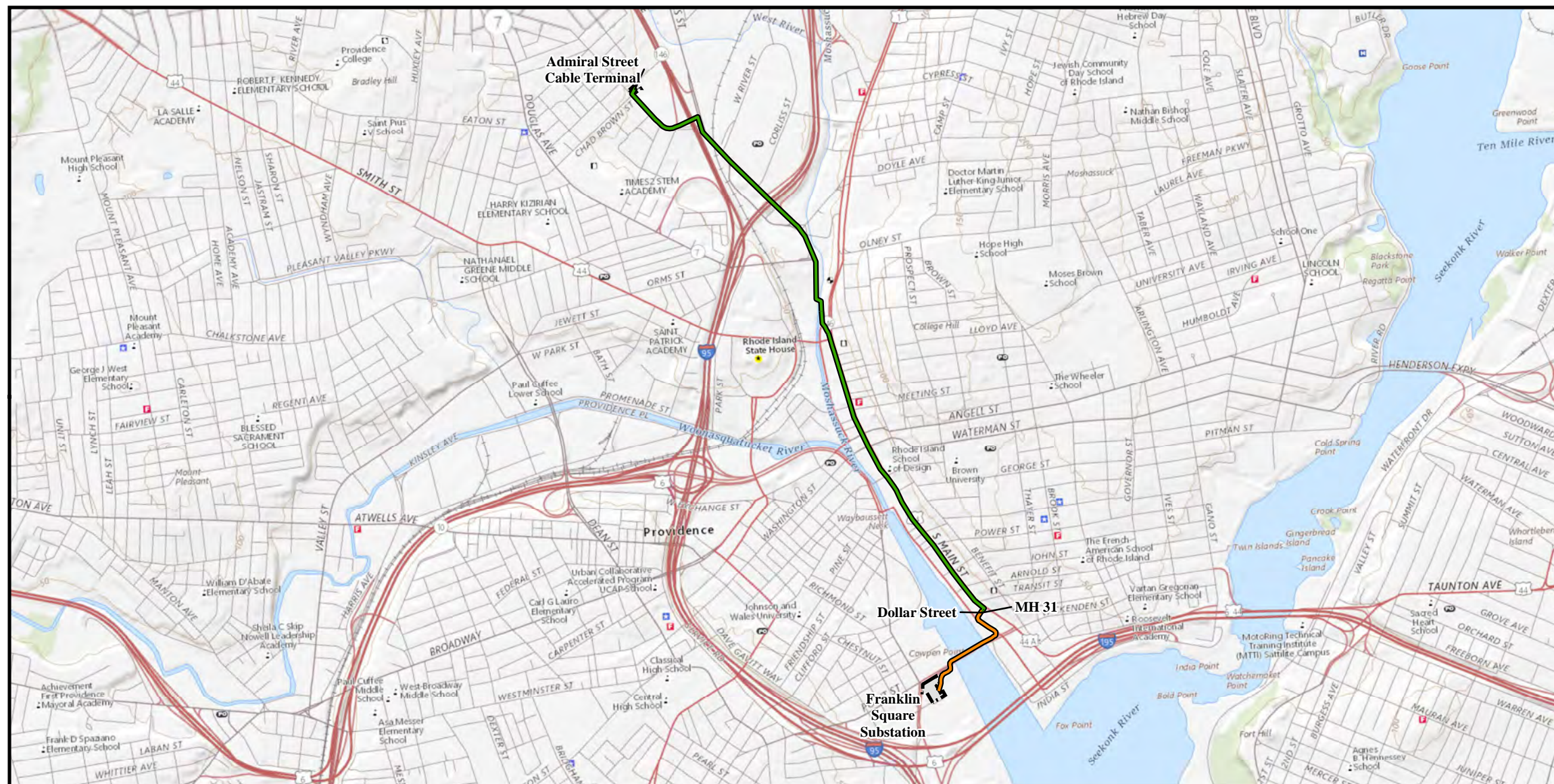


Q-143 and R-144 115 kV Cable Reconductoring Project

Providence, Rhode Island

Rhode Island Energy Facility Siting Board

Figures



1" = 2,000'

Prepared For:

The Narragansett Electric Company
d/b/a National Grid
280 Melrose Street
Providence, RI 02907

Compiled By:

POWER Engineers, Inc.
2 Hampshire Street
Suite 301
Foxborough, MA 02035

October 2019

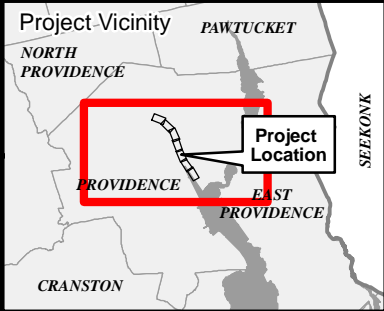
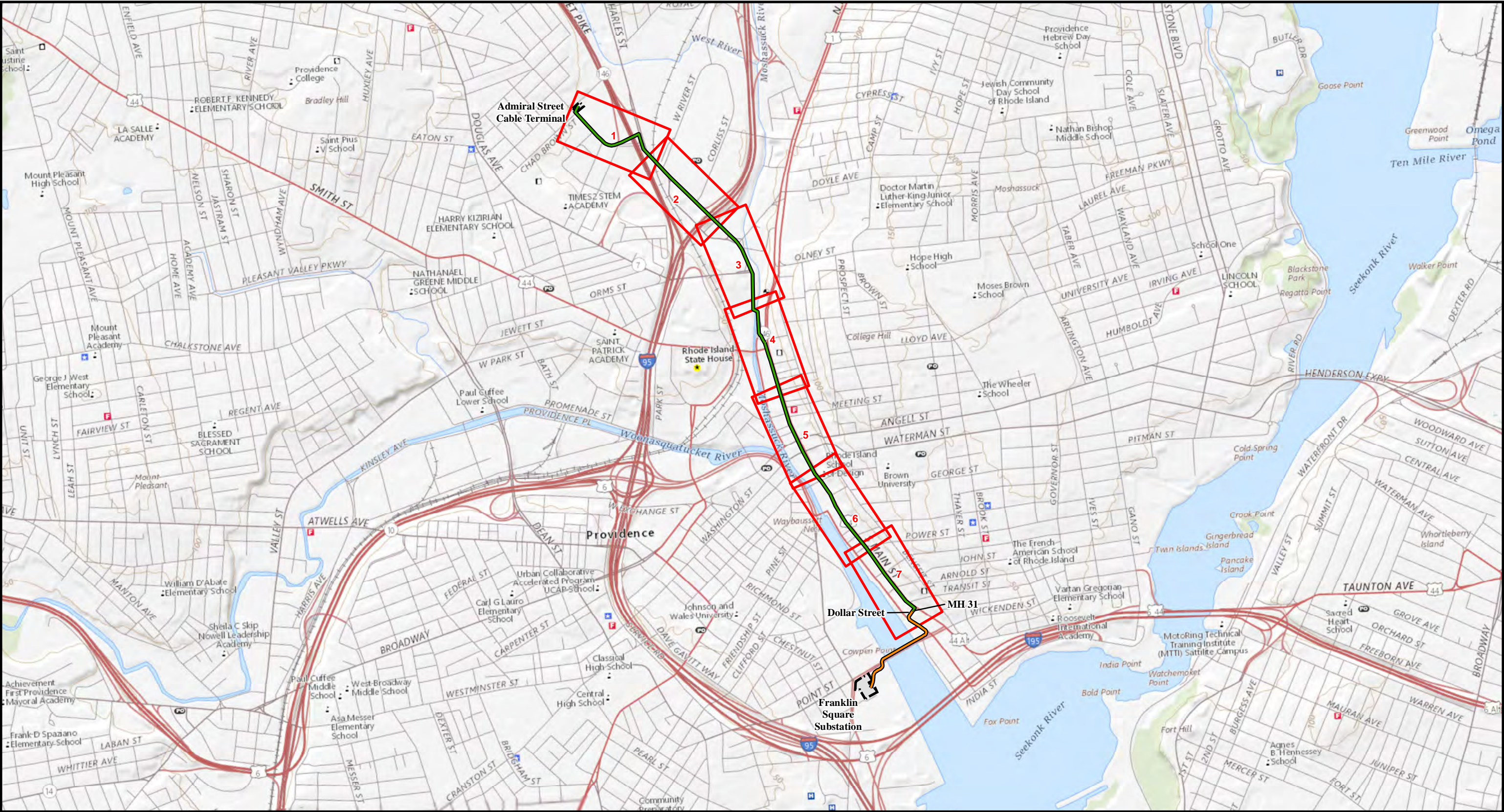
Q-143 and R-144 115 kV Cable Reconductoring Project

Providence, Rhode Island
Rhode Island Energy Facility Siting Board



List of Figures

Figure No.	Description
1	Project Route
2	Study Area
3	Proposed Duct Bank
4	Alternative Routes
5	Land Use / Zoning



Legend

- Page Boundary
- Providence River Cable Relocation Project
- Existing Q-143 and R-144 Cable Route
- Existing Transmission Facility

Scale

1 inch = 1,500 feet

0 750 1,500

Feet

**Indicates Layers Set to Transparency*

North Arrow

N

Q-143 AND R-144 115 KV CABLE RECONDUCTORING PROJECT

Figure 1: Project Route Map Book Index

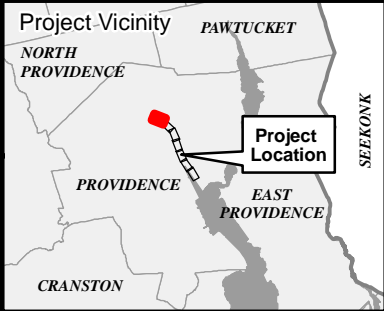
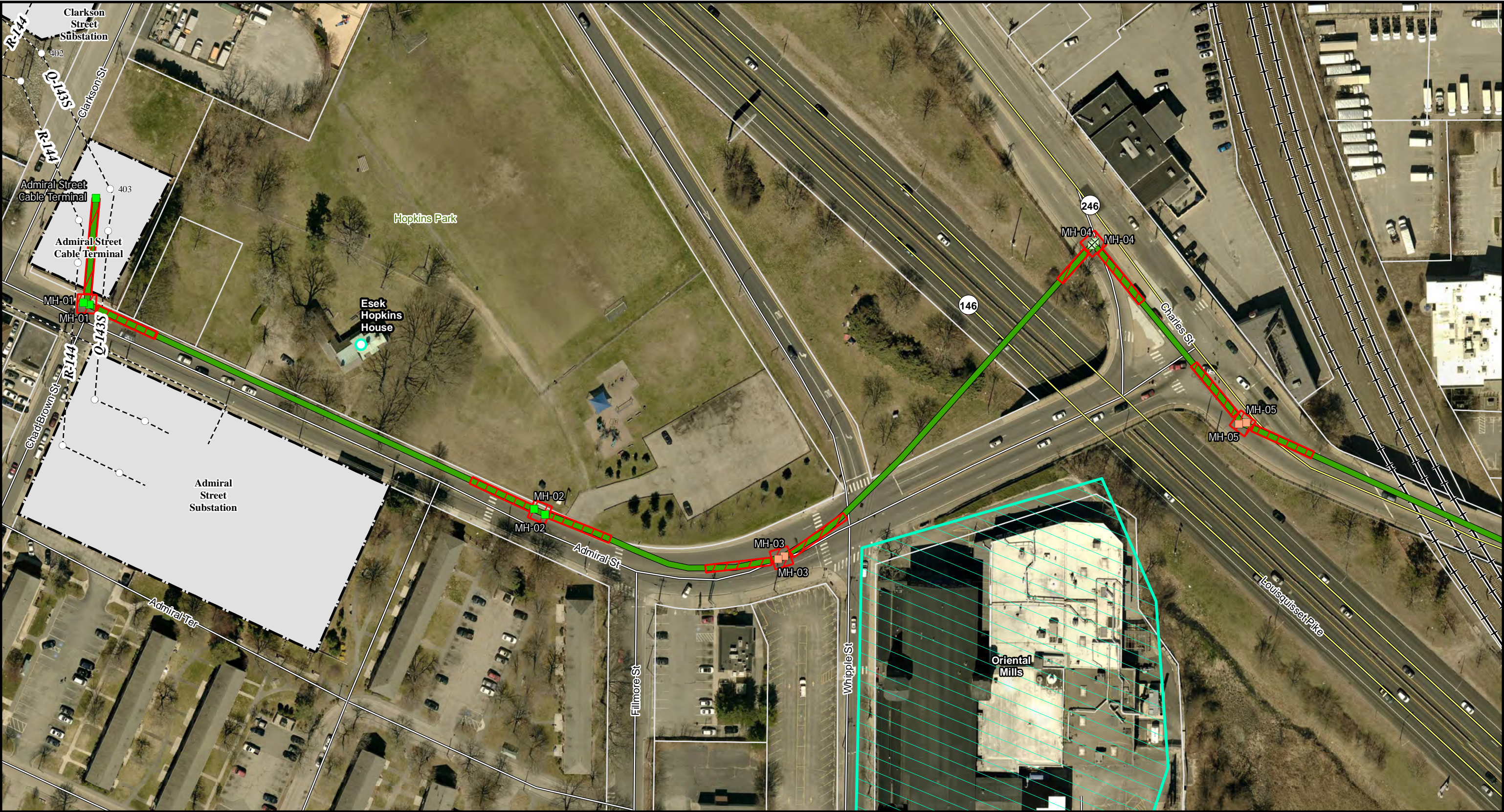
City of Providence, County of Providence,
State of Rhode Island

**NOT FOR
CONSTRUCTION**

Service Layer Credits: USGS The National Map; National Boundaries Dataset, 3DEP Elevation Program, Geographic Names Information System, National Hydrography Dataset, National Land Cover Database, National Structures Dataset, and National Transportation Dataset; USGS Global Ecosystems; U.S. Census Bureau TIGER/Line data; USFS Road Data; Natural Earth Data; U.S. Department of State Humanitarian Information Unit; and NOAA National Centers for Environmental Information, U.S. Coastal Relief Model. Data refreshed October 2018.

nationalgrid

POWER ENGINEERS



Legend

Replace Manholes with Pre-Cast Manholes

Bridge Existing Manholes by Joining Duct Bank on Either Side, Retire in Place

Bypass Existing Manholes by Joining Duct Bank on Either Side, Retire in Place

Existing Q-143 and R-144 Cable Route

National Register Property

National Register Property

Excavation Limits

Utility Pole

Existing Transmission Line

Existing Transmission Facility

US or State Highway

Local Road

Railroad

Parcel Boundary

1 inch = 100 feet

0 50 100

Feet

*Indicates Layers Set to Transparency

Q-143 AND R-144 115 KV CABLE RECONDUCTORING PROJECT

Figure 1: Project Route Map Book

City of Providence, County of Providence,
State of Rhode Island

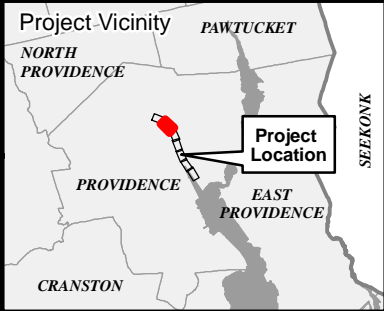
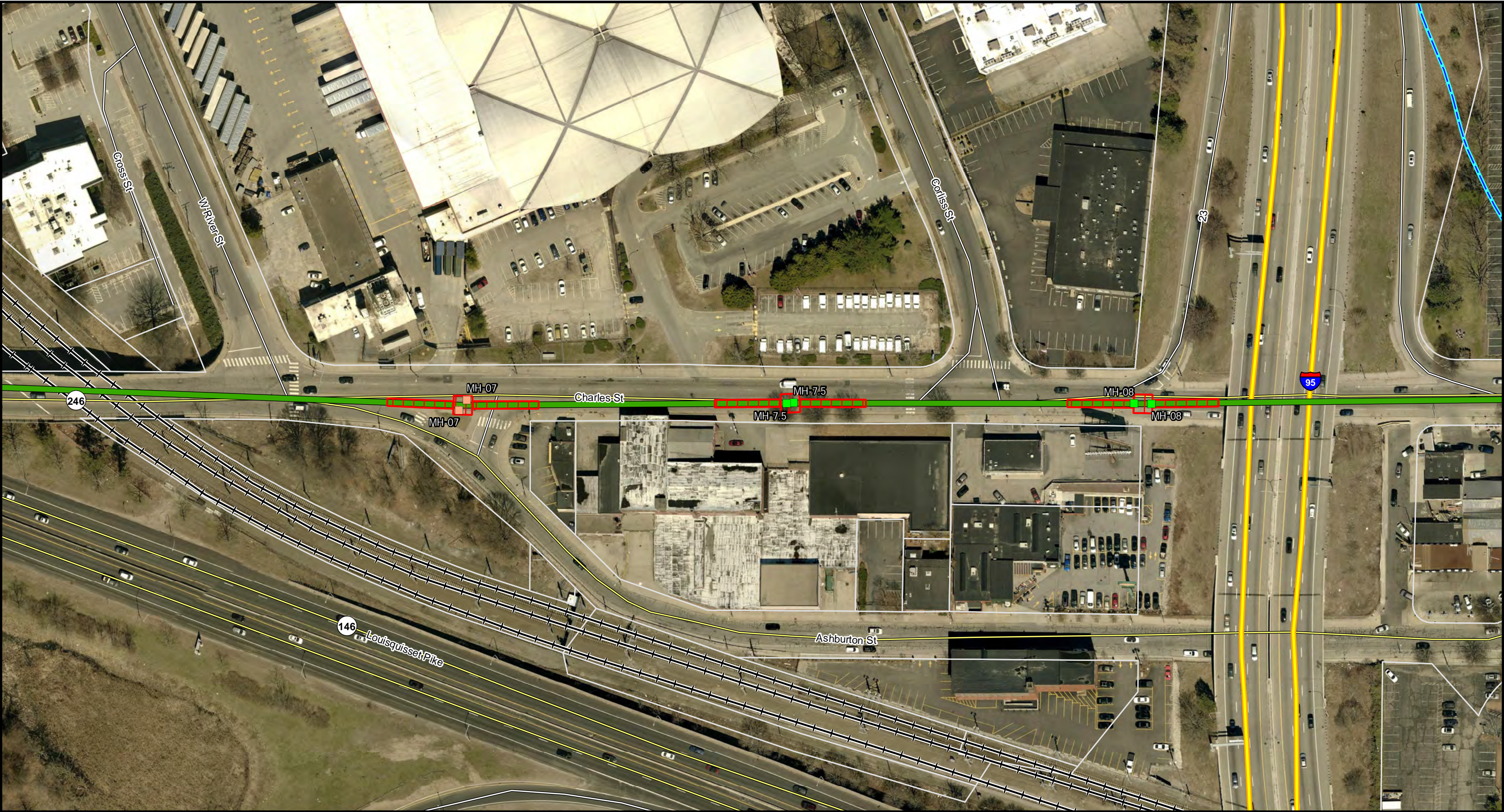
Page 1 of 7

NOT FOR CONSTRUCTION

Service Layer Credits: University of Rhode Island, April 2018 3 inch Aerial Photography

nationalgrid
POWER ENGINEERS

THIS DOCUMENT IS INTENDED FOR GENERAL PLANNING & INFORMATION PURPOSES ONLY. ALL MEASUREMENTS & LOCATIONS ARE APPROXIMATE.



Legend

Replace Manholes with Pre-Cast Manholes	Interstate Highway
Bridge Existing Manholes by Joining Duct Bank on Either Side, Retire in Place	US or State Highway
Existing Q-143 and R-144 Cable Route	Local Road
Excavation Limits	Railroad
	River Bank Area
	Parcel Boundary

1 inch = 100 feet
0 50 100
Feet

**Indicates Layers Set to Transparency*

Q-143 AND R-144 115 KV CABLE RECONDUCTORING PROJECT

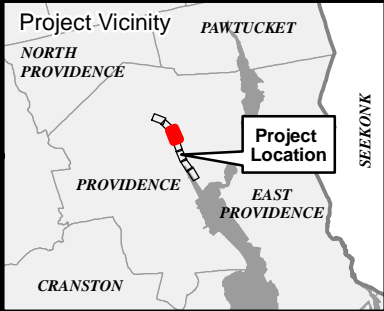
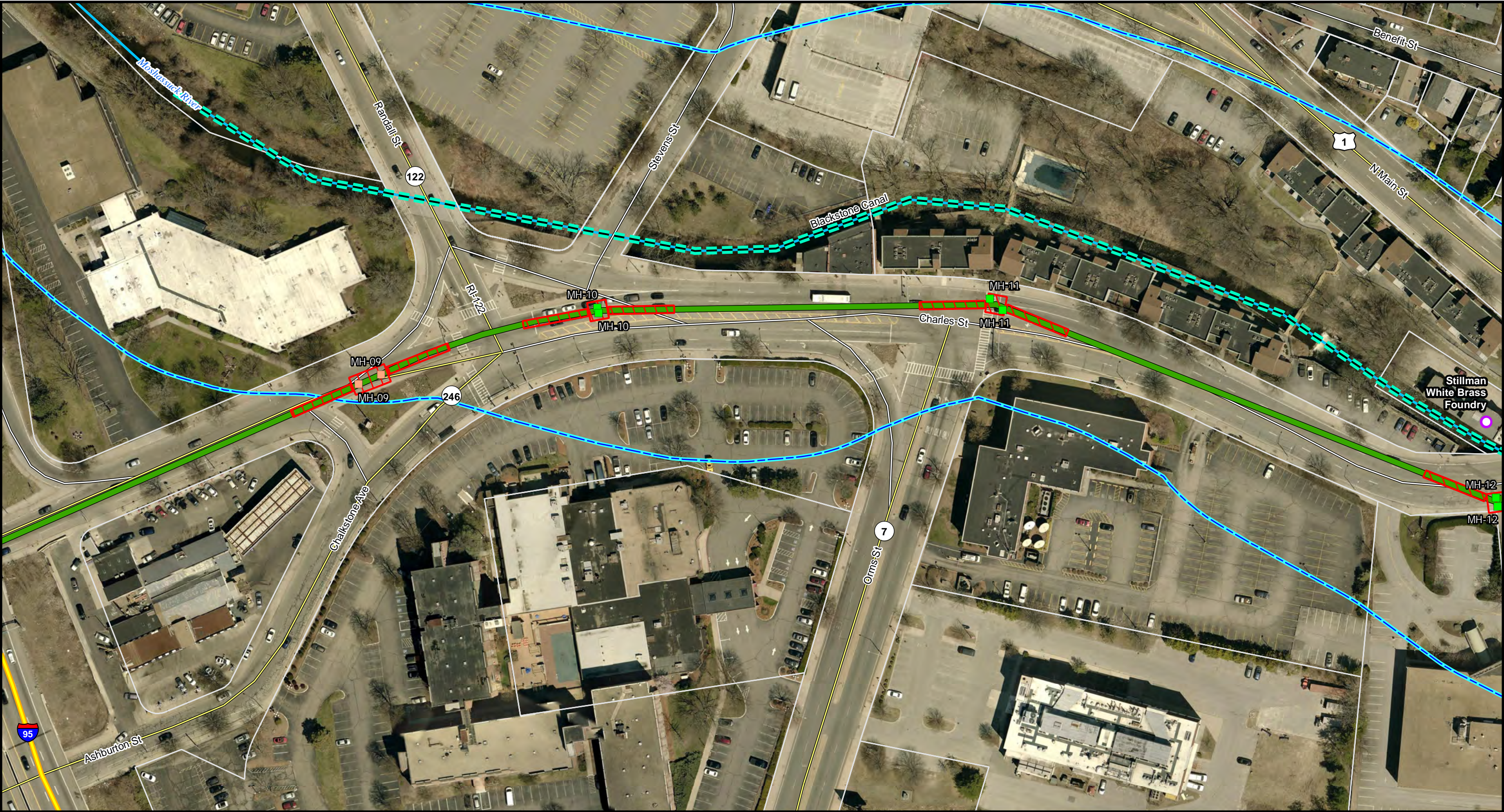
Figure 1: Project Route Map Book

City of Providence, County of Providence,
State of Rhode Island

Page 2 of 7

NOT FOR CONSTRUCTION

Service Layer Credits: University of Rhode Island, April 2018 3 inch Aerial Photography



Legend

Replace Manholes with Pre-Cast Manholes	National Register Contributing Properties	River Bank Area
Bridge Existing Manholes by Joining Duct Bank on Either Side, Retire in Place	National Register Property	Parcel Boundary
Existing Q-143 and R-144 Cable Route	Excavation Limits	
	Interstate Highway	
	US or State Highway	
	Local Road	

1 inch = 100 feet
0 50 100 Feet
*Indicates Layers Set to Transparency

Q-143 AND R-144 115 KV CABLE RECONDUCTORING PROJECT

Figure 1: Project Route Map Book

City of Providence, County of Providence,
State of Rhode Island

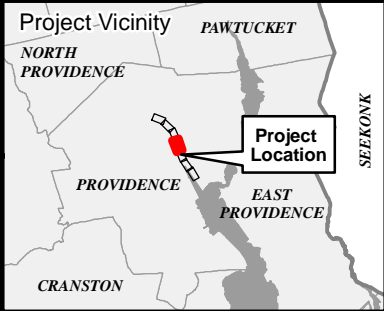
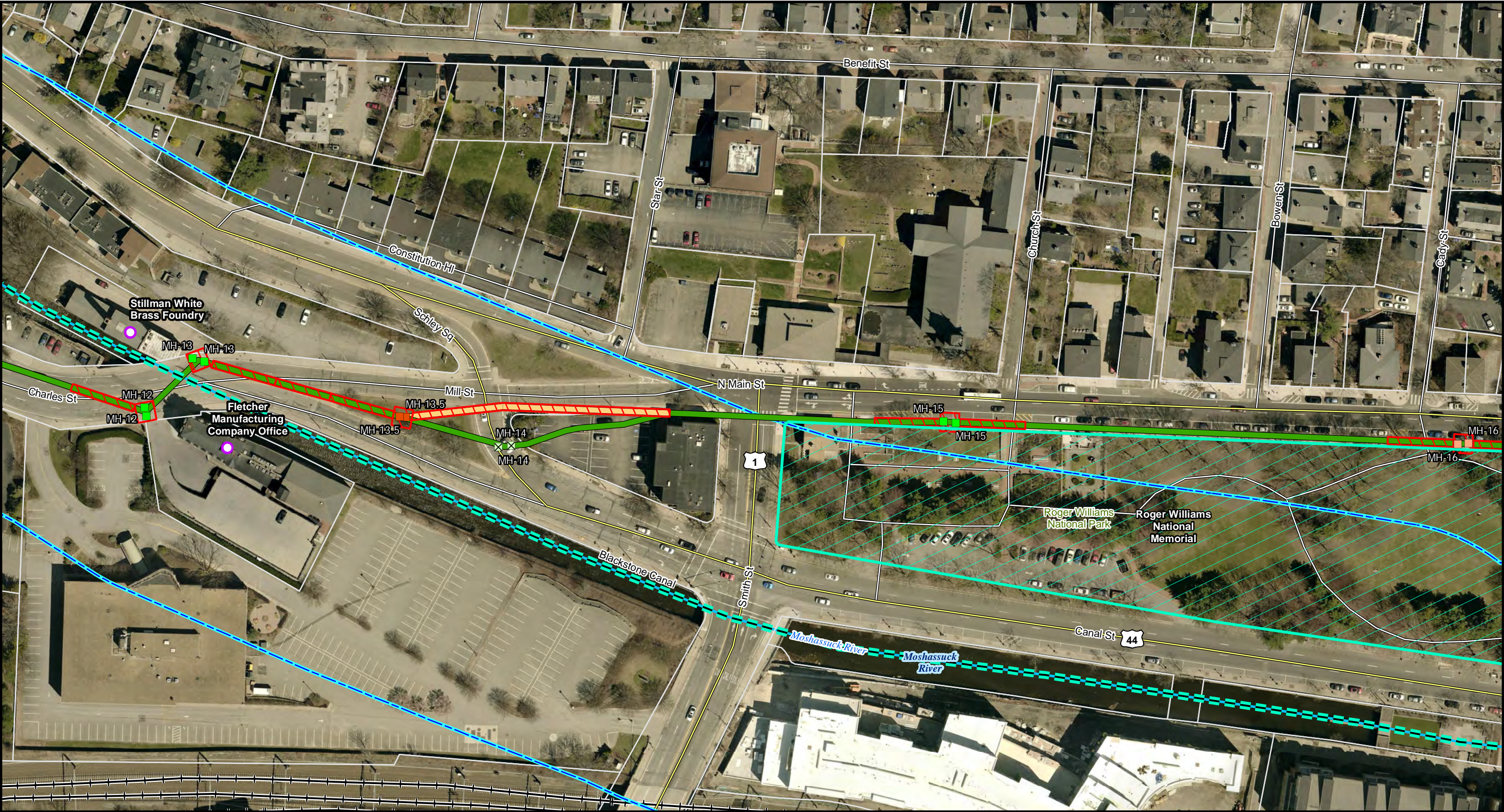
Page 3 of 7

NOT FOR CONSTRUCTION

Service Layer Credits: University of Rhode Island, April 2018 3 inch Aerial Photography

nationalgrid

POWER ENGINEERS



Legend

New Manholes to be Installed at New Location	Bypass Existing Manholes by Joining Duct Bank on Either Side, Retire in Place	National Register Property	River Bank Area
Replace Manholes with Pre-Cast Manholes	Existing Q-143 and R-144 Cable Route	National Register Property	Parcel Boundary
Bridge Existing Manholes by Joining Duct Bank on Either Side, Retire in Place	Proposed Q-143 & R-144 Cable Route Re-alignment	Excavation Limits	
National Register Contributing Properties		US or State Highway	
		Local Road	
		Railroad	

1 inch = 100 feet
0 50 100 Feet

**Indicates Layers Set to Transparency*

Q-143 AND R-144 115 KV CABLE RECONDUCTORING PROJECT

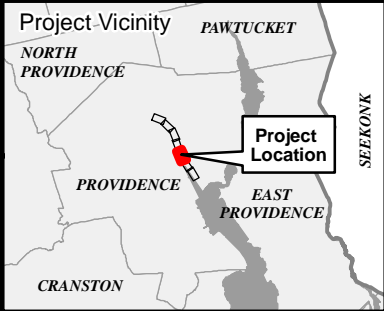
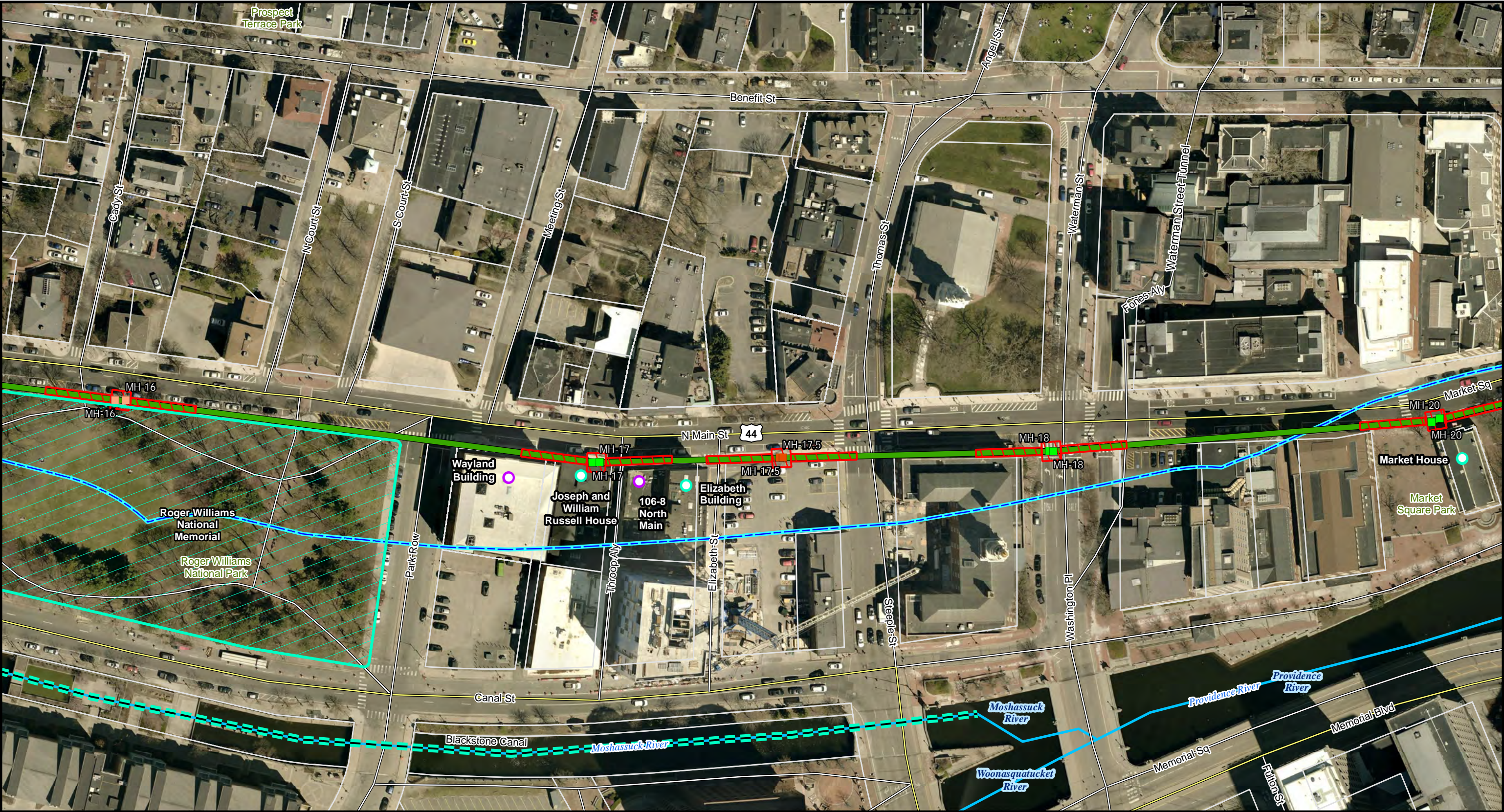
Figure 1: Project Route Map Book

City of Providence, County of Providence,
State of Rhode Island
Page 4 of 7

**NOT FOR
CONSTRUCTION**

Service Layer Credits: University
of Rhode Island, April 2018 3 inch
Aerial Photography





Legend

New Manholes to be Installed at New Location	Existing Q-143 and R-144 Cable Route	Excavation Limits
Replace Manholes with Pre-Cast Manholes	National Register Contributing Properties	US or State Highway
Bridge Existing Manholes by Joining Duct Bank on Either Side, Retire in Place	National Register Property	Local Road
National Register Property	National Register Property	River Bank Area
National Register Property	National Register Property	Parcel Boundary

1 inch = 100 feet
0 50 100 Feet

**Indicates Layers Set to Transparency*

Q-143 AND R-144 115 KV CABLE RECONDUCTORING PROJECT

Figure 1: Project Route Map Book

City of Providence, County of Providence,
State of Rhode Island

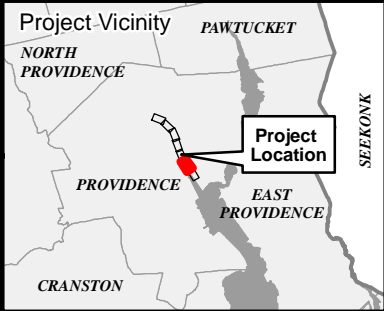
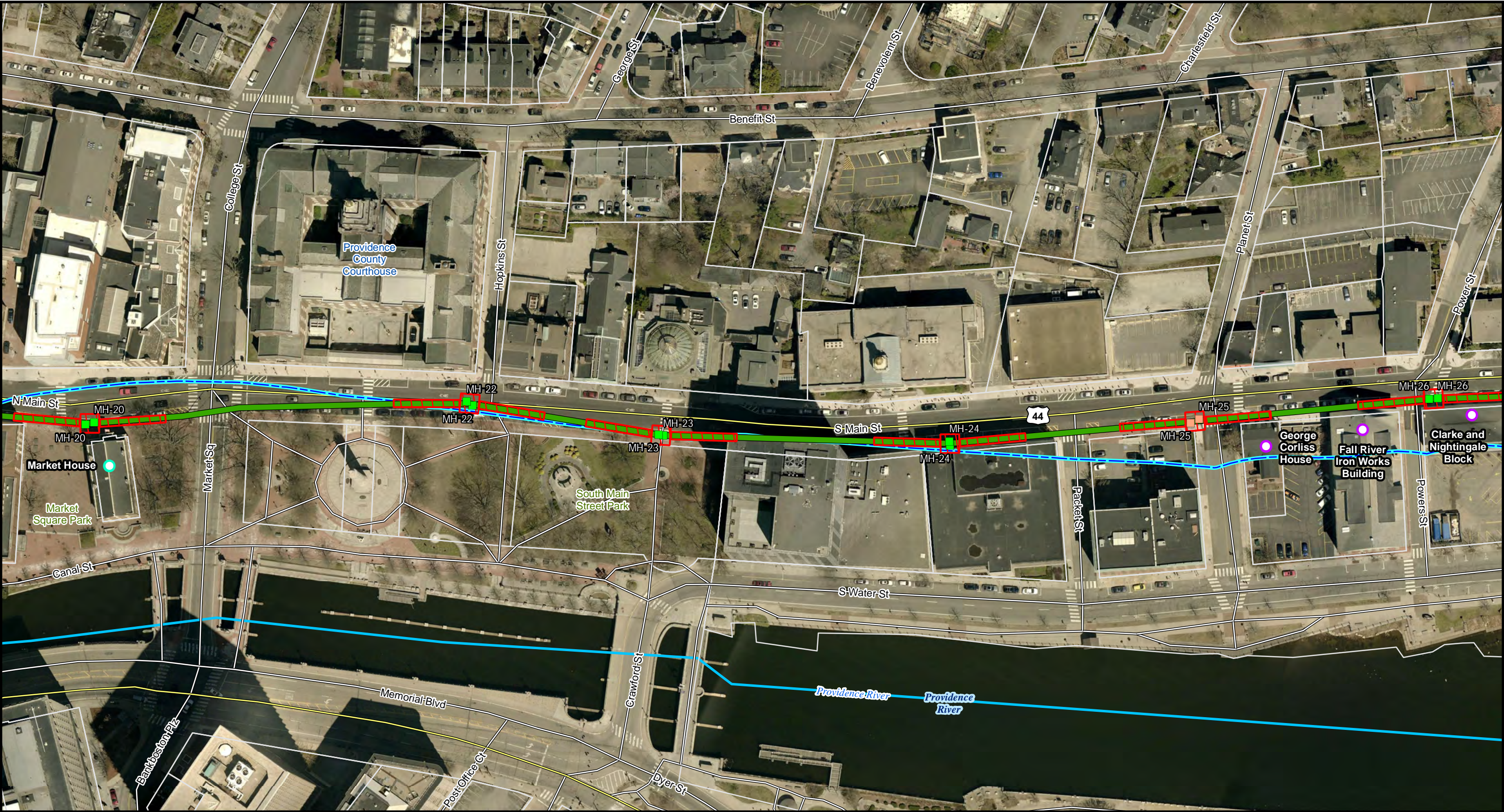
Page 5 of 7

NOT FOR CONSTRUCTION

Service Layer Credits: University of Rhode Island, April 2018 3 inch Aerial Photography

nationalgrid

POWER ENGINEERS



Legend

Replace Manholes with Pre-Cast Manholes	National Register Contributing Properties	Parcel Boundary
Bridge Existing Manholes by Joining Duct Bank on Either Side, Retire in Place	National Register Property	
Existing Q-143 and R-144 Cable Route	Excavation Limits	
	US or State Highway	
	Local Road	
	River Bank Area	

1 inch = 100 feet
0 50 100 Feet
*Indicates Layers Set to Transparency

Q-143 AND R-144 115 KV CABLE RECONDUCTORING PROJECT

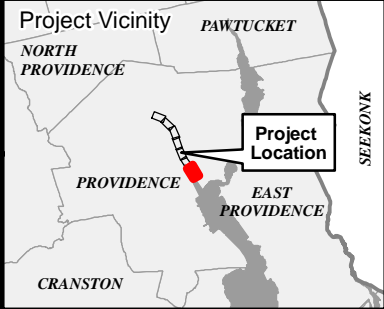
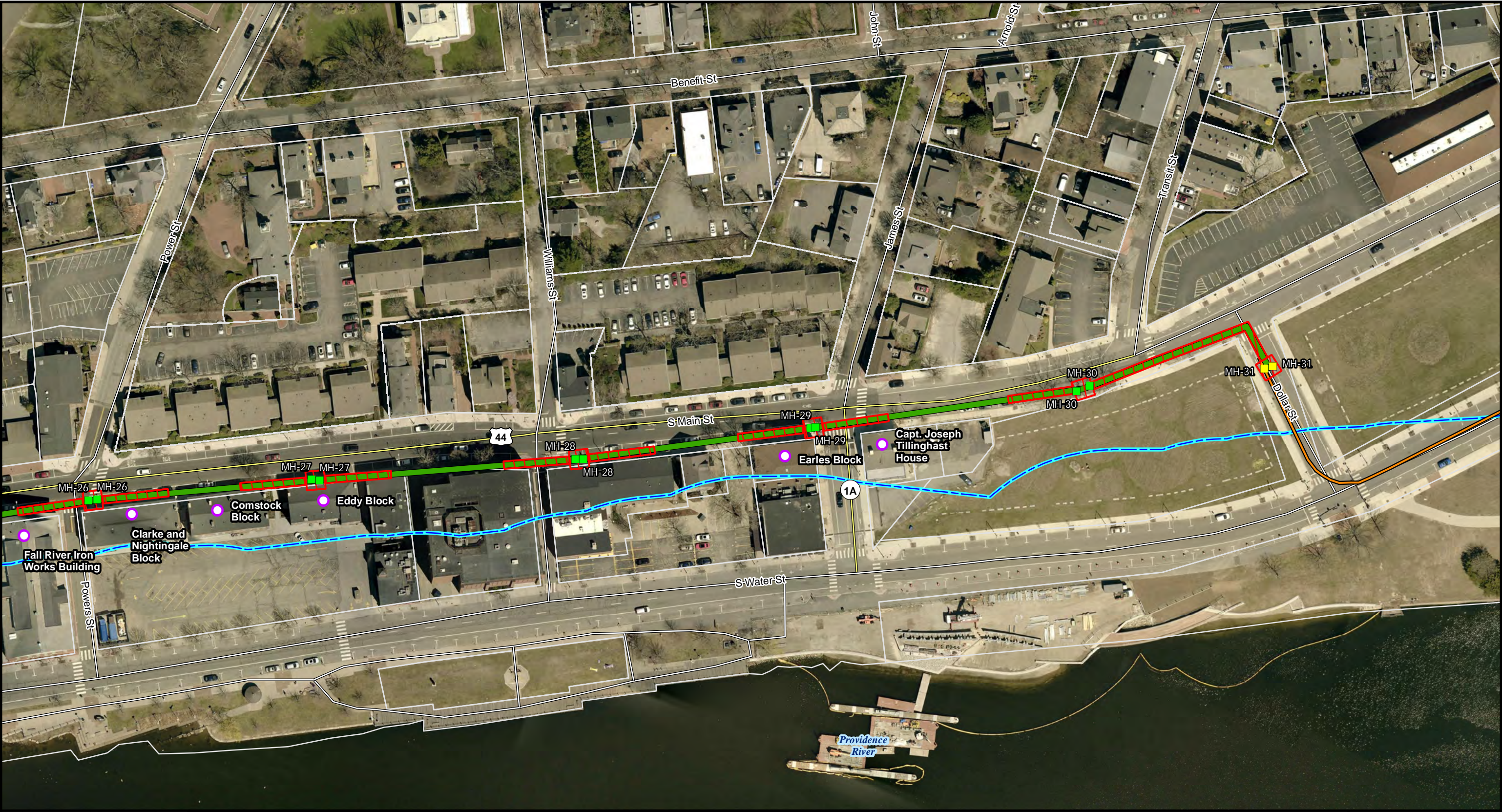
Figure 1: Project Route Map Book

City of Providence, County of Providence,
State of Rhode Island
Page 6 of 7

NOT FOR CONSTRUCTION

Service Layer Credits: University of Rhode Island, April 2018 3 inch Aerial Photography

nationalgrid
POWER ENGINEERS



Legend

- Bridge Existing Manholes by Joining Duct Bank on Either Side, Retire in Place
- Partial Rebuild of Manhole
- Existing Q-143 and R-144 Cable Route
- National Register Contributing Properties
- Providence River Cable Relocation Project
- Excavation Limits
- US or State Highway
- Local Road
- River Bank Area
- Parcel Boundary

1 inch = 100 feet

0 50 100

Feet

**Indicates Layers Set to Transparency*

Q-143 AND R-144 115 KV CABLE RECONDUCTORING PROJECT

Figure 1: Project Route Map Book

City of Providence, County of Providence,
State of Rhode Island

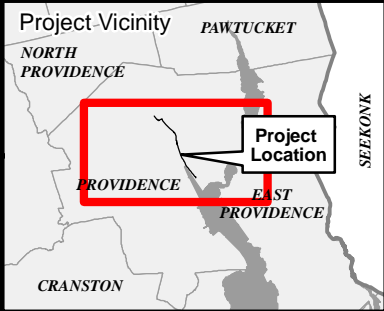
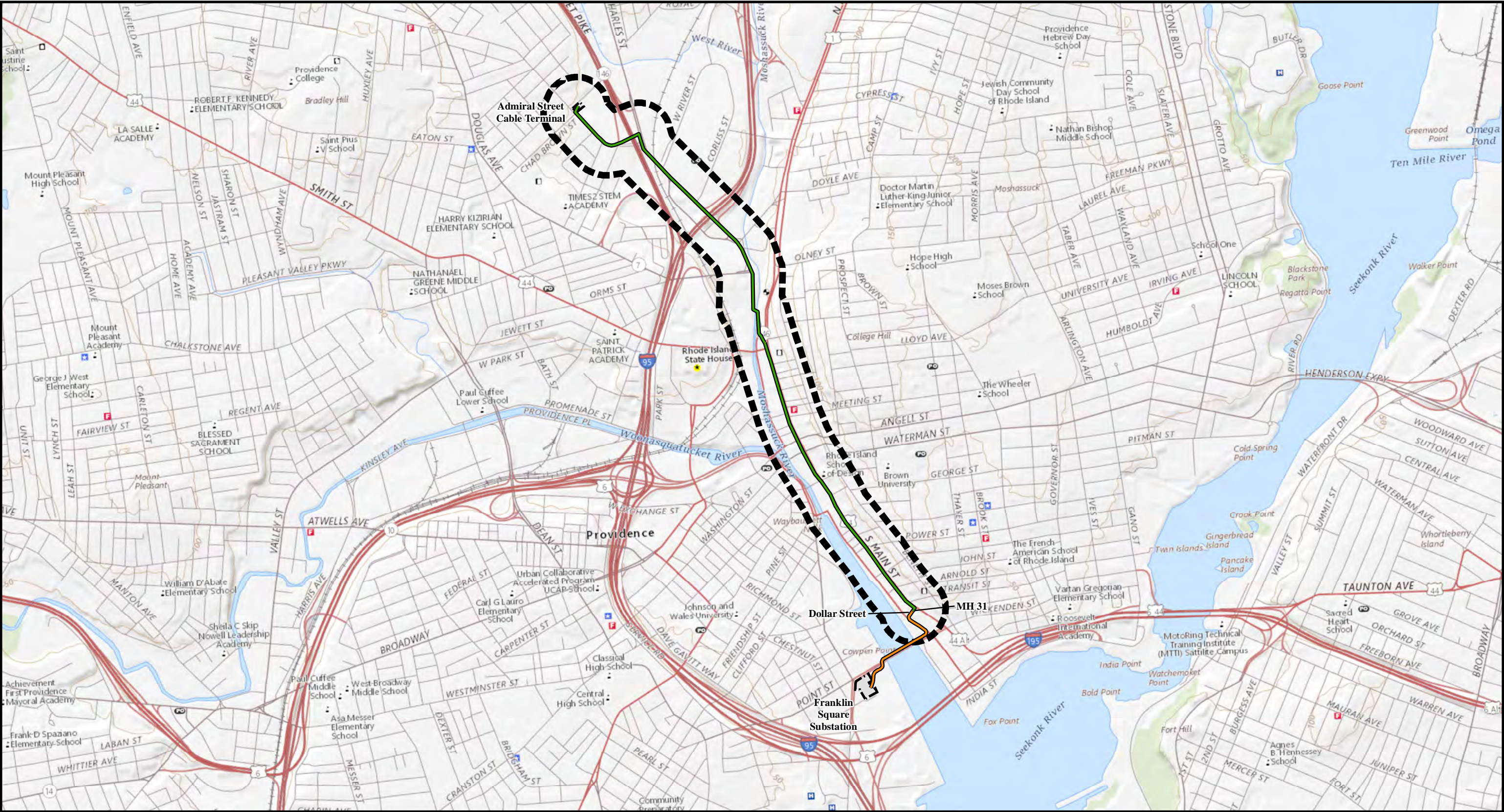
Page 7 of 7

NOT FOR CONSTRUCTION

Service Layer Credits: University of Rhode Island, April 2018 3 inch Aerial Photography

nationalgrid

POWER ENGINEERS



Legend

- Providence River Cable Relocation Project
- Existing Q-143 and R-144 Cable Route
- Project Study Area (500 foot buffer)
- Existing Transmission Facility

1 inch = 1,500 feet

0 750 1,500

Feet

*Indicates Layers Set to Transparency

Q-143 AND R-144 115 KV CABLE RECONDUCTING PROJECT

Figure 2: Study Area

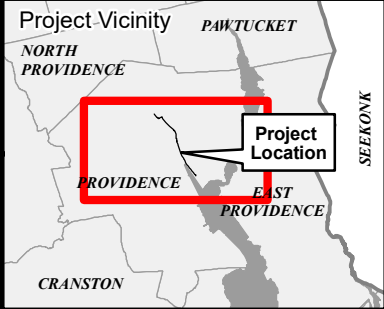
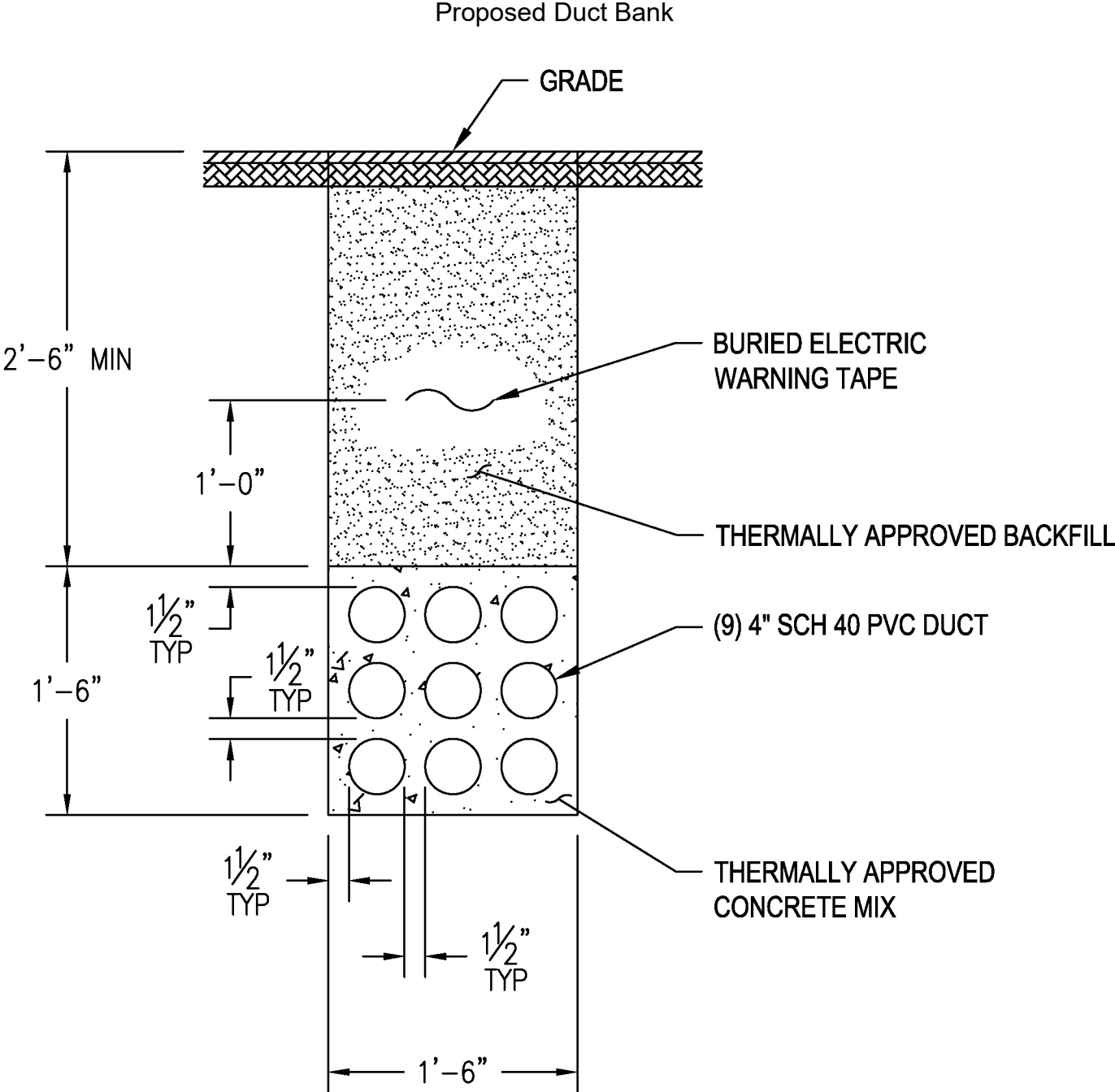
City of Providence, County of Providence,
State of Rhode Island

NOT FOR CONSTRUCTION

Service Layer Credits: USGS The National Map; National Boundaries Dataset; 3DEP Elevation Program; Geographic Names Information System; National Hydrography Dataset; National Land Cover Database; National Structures Dataset; and National Transportation Dataset; USGS Global Ecosystems; U.S. Census Bureau TIGER/Line data; USFS Road Data; Natural Earth Data; U.S. Department of State Humanitarian Information Unit; and NOAA National Centers for Environmental Information; U.S. Coastal Relief Model. Data refreshed October 2018.

nationalgrid

POWER ENGINEERS



Legend



**Indicates Layers Set to Transparency*

Q-143 AND R-144 115 KV CABLE RECONDUCTORING PROJECT

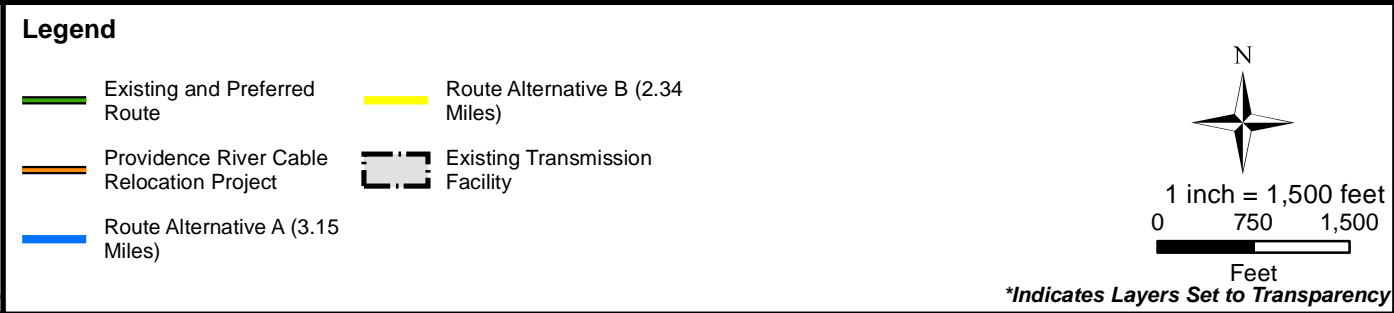
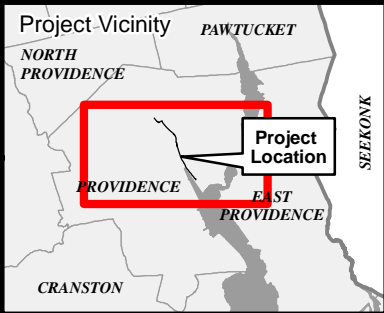
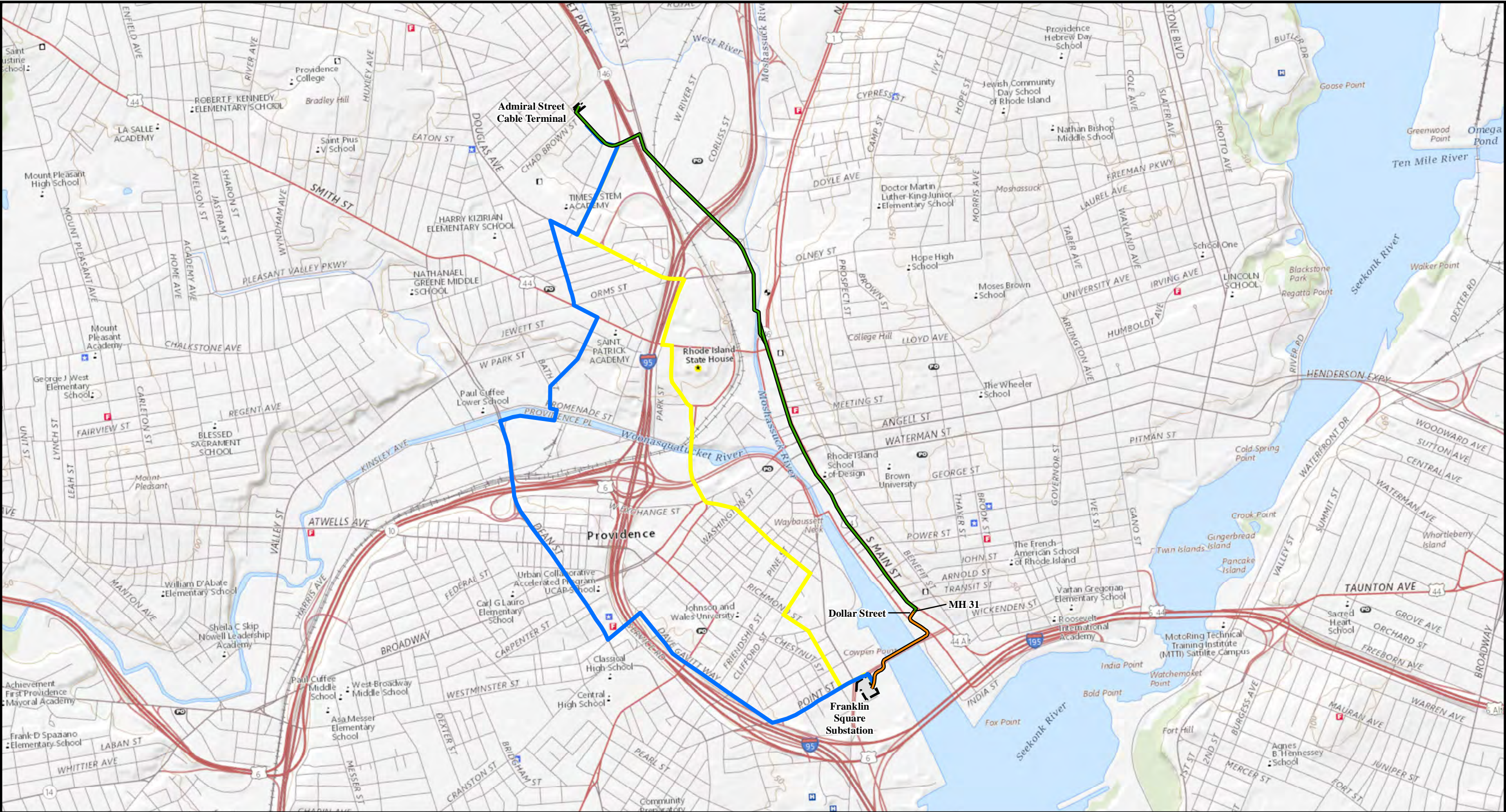
Figure 3: Proposed Duct Bank

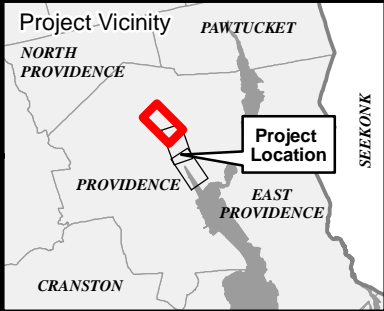
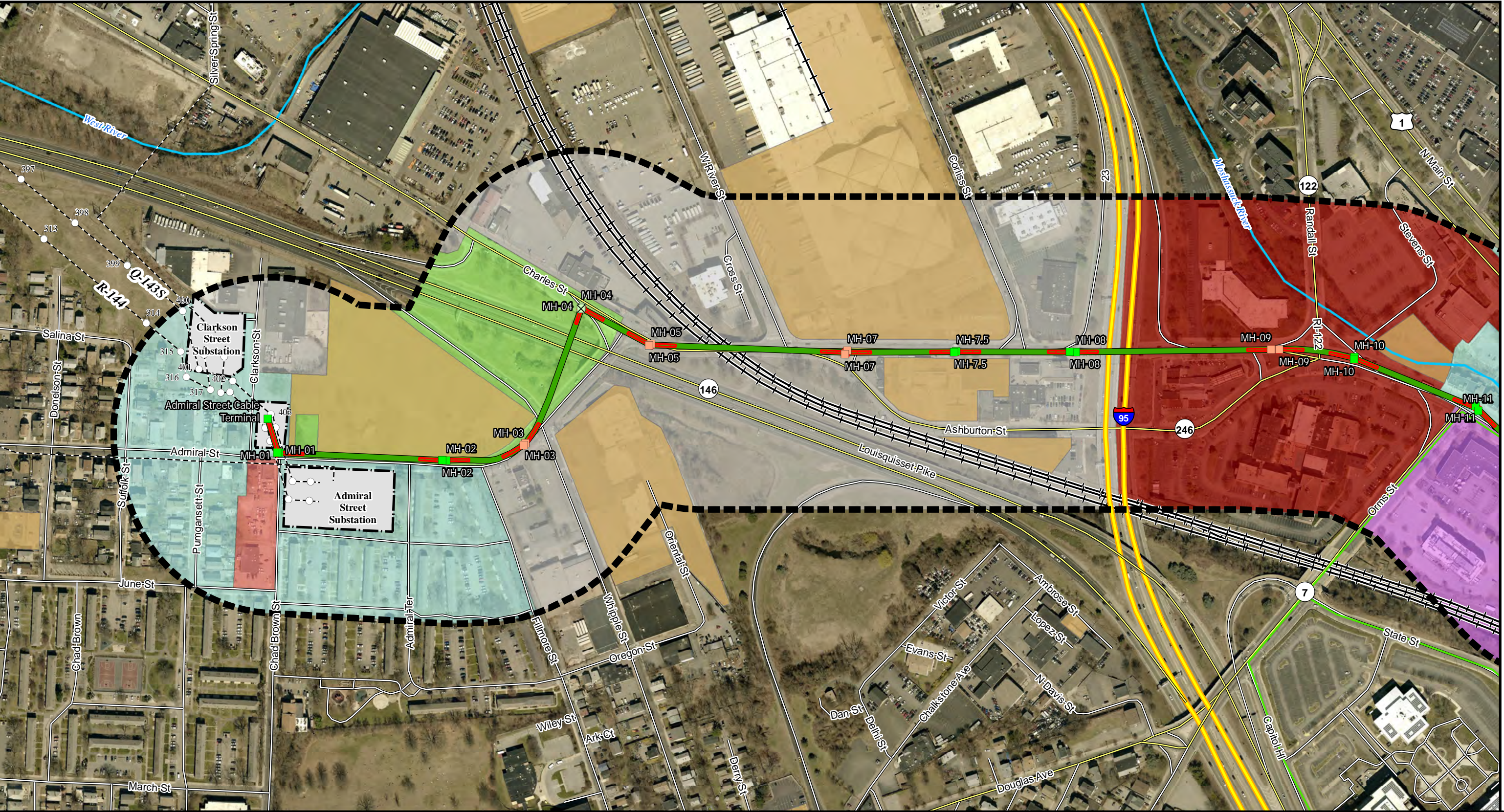
City of Providence, County of Providence,
State of Rhode Island

**NOT FOR
CONSTRUCTION**

Service Layer Credits:







Legend

- Replace Manholes with Pre-Cast Manholes
- Bridge Existing Manholes by Joining Duct Bank on Either Side, Retire in Place
- Bypass Existing Manholes by Joining Duct Bank on Either Side, Retire in Place
- Existing Q-143 and R-144 Cable Route
- Excavation Limits
- Utility Pole
- Existing Transmission Line
- Existing Transmission Facility
- Project Study Area (500 foot buffer)
- Interstate Highway
- US or State Highway
- Local Road
- Railroad
- B Streets
- Historic District - Providence Landmark District*
- Downtown District*
- Heavy Commercial District*
- Light Industrial District*
- Neighborhood Commercial District*
- Open Space District*
- Residential District*

Scale

1 inch = 300 feet

0 100 200 300

Feet

**Indicates Layers Set to Transparency*

Q-143 AND R-144 115 KV CABLE REDUCTORING PROJECT

Figure 5: Land Use/ Zoning Map Book

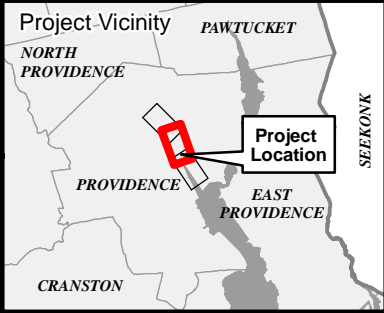
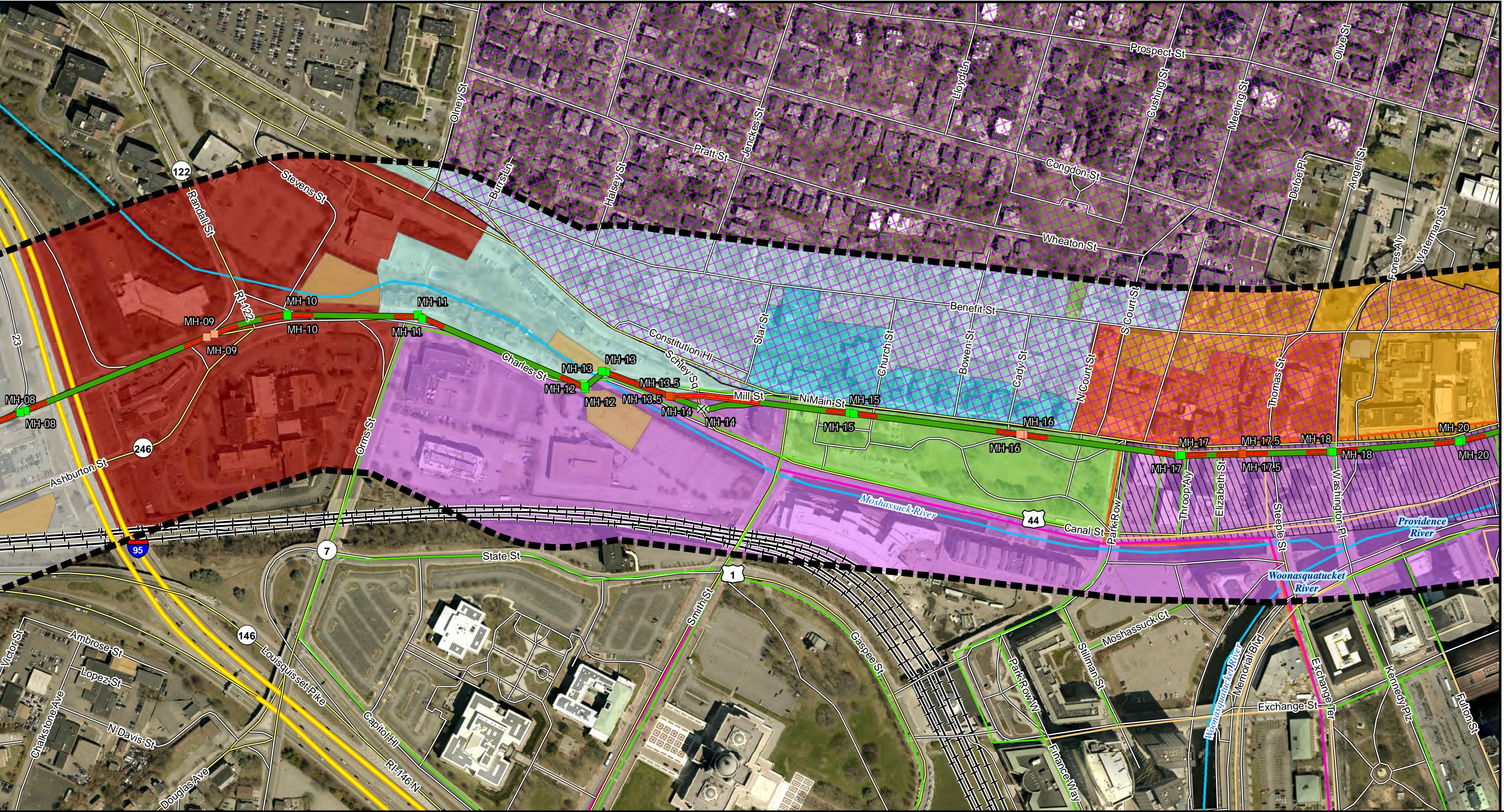
City of Providence, County of Providence,
State of Rhode Island
Page 1 of 3

**NOT FOR
CONSTRUCTION**

Service Layer Credits: University of Rhode Island, April 2018 3 inch Aerial Photography

nationalgrid

POWER ENGINEERS



Legend

New Manholes to be Installed at New Location	Existing Q-143 and R-144 Cable Route	Local Road	B Streets	Light Industrial District*
Replace Manholes with Pre-Cast Manholes	Proposed Q-143 & R-144 Cable Route Re-alignment	Capital Center Special Development District	Historic District - Providence Landmark District*	Open Space District*
Bridge Existing Manholes by Joining Duct Bank on Either Side, Retire in Place	Excavation Limits	Downtown Overlay District	Downtown District*	Residential District*
Bypass Existing Manholes by Joining Duct Bank on Either Side, Retire in Place	Project Study Area (500 foot buffer)	Educational or Healthcare Institutional Overlay District	Educational Institutional District*	Residential Professional District*
	Interstate Highway	Historic Overlay District	General Commercial District*	
	US or State Highway		Heavy Commercial District*	

*Indicates Layers Set to Transparency

1 inch = 300 feet

0 100 200 300

Feet

Q-143 AND R-144 115 KV CABLE RECONDUCTORING PROJECT

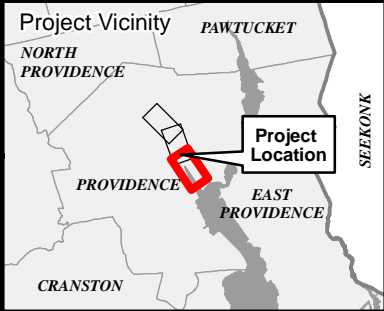
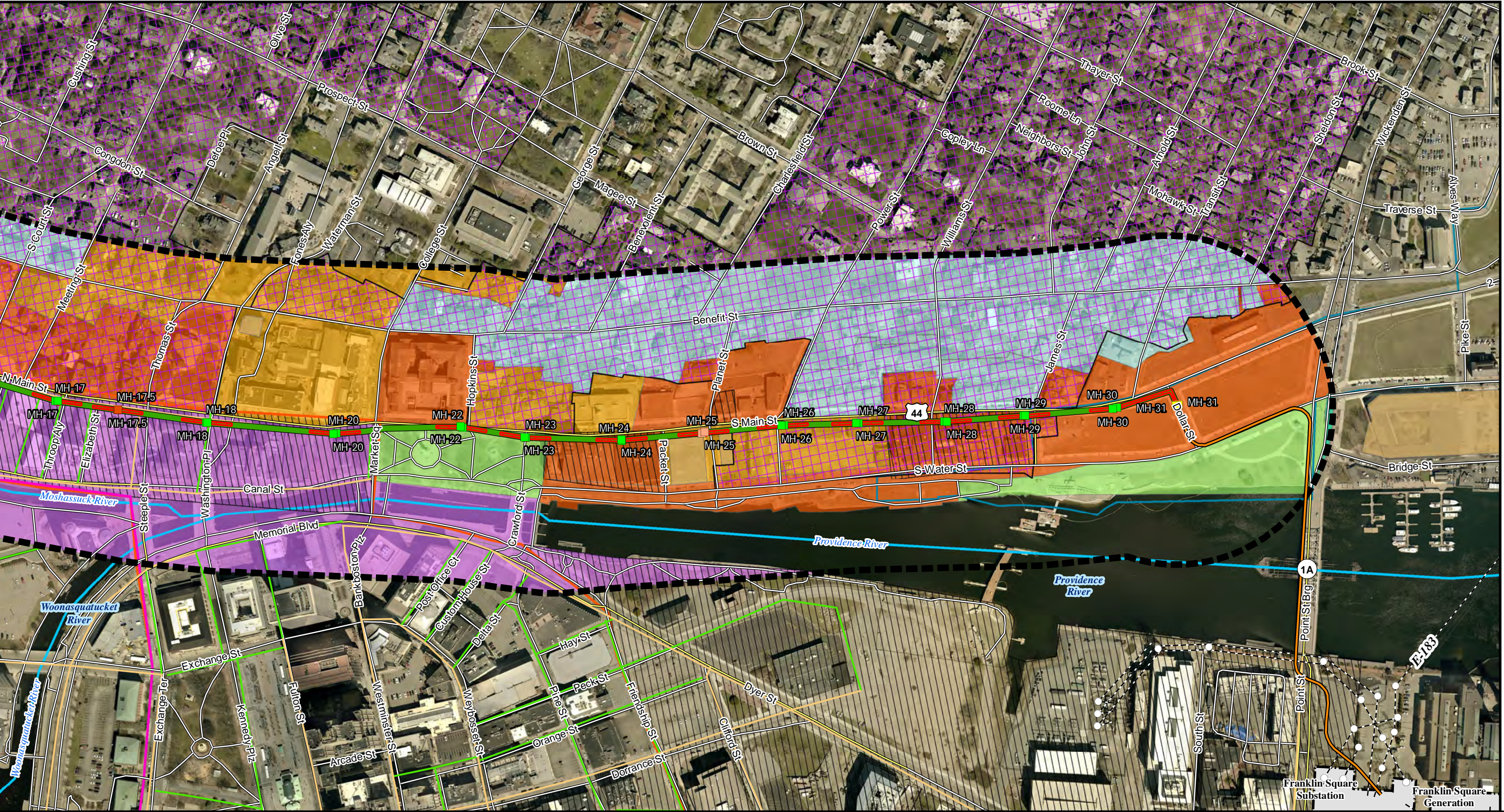
Figure 5: Land Use/ Zoning Map Book

City of Providence, County of Providence,
State of Rhode Island
Page 2 of 3

NOT FOR
CONSTRUCTION

Service Layer Credits: University of Rhode Island, April 2018 3 inch Aerial Photography

nationalgrid
POWER ENGINEERS



Legend

New Manholes to be Installed at New Location	Providence River Cable Relocation Project	Local Road	A Streets	Mixed-Use Waterfront District*
Replace Manholes with Pre-Cast Manholes	Excavation Limits	Capital Center Special Development District	B Streets	Open Space District*
Bridge Existing Manholes by Joining Duct Bank on Either Side, Retire in Place	Utility Pole	Downcity Overlay District	Historic District - Providence Landmark District*	Residential District*
Partial Rebuild of Manhole	Existing Transmission Line	East Side I-195 Overlay District	Downtown District*	
Existing Q-143 and R-144 Cable Route	Existing Transmission Facility	Educational or Healthcare Institutional Overlay District	Educational Institutional District*	
Project Study Area (500 foot buffer)	US or State Highway	Historic Overlay District	General Commercial District*	

***Indicates Layers Set to Transparency**

Q-143 AND R-144 115 KV CABLE RECONDUCTORING PROJECT

Figure 5: Land Use/ Zoning Map Book

City of Providence, County of Providence,
State of Rhode Island
Page 3 of 3

**NOT FOR
CONSTRUCTION**

Service Layer Credits: University of Rhode Island, April 2018 3 inch Aerial Photography

nationalgrid
POWER ENGINEERS